

*Property of  
Providence Washington Ins. Co.  
Providence  
R.I.*

*No 29.*

# LOWELL

MASS.

## SANBORN MAP & PUBLISHING CO. LIMITED.

115 BROADWAY, NEW YORK.

SCALE, 50 FT. TO ONE INCH. PRICE, 35 DOLLARS.

AUGUST 1882 CORRECTED FEB. 1888

### REPORT.

POPULATION 60,000. Prevailing Winds West.

**WATER WORKS.** (1) CITY WATER PIPES IN STREETS, supplied from Reservoir of 30,000,000 gallons capacity, situated at Centralville, elevation about 140 feet above City Hall. Pressure at City Hall 58 pounds per square inch. Water is pumped into this Reservoir from Merrimack River.

(2) THE MILL COMPANIES are supplied with water by LOOKS AND CANALS CO. Pipes, from a small Reservoir at Belvidere. Pressure at City Hall about 75 pounds per square inch. The Pipes of these two systems are connected by Gates.

(3) HIGH SERVICE RESERVOIR, 1,250,000 gallons capacity, supplies the higher portion of Belvidere and Centralville, not shown on this Map. Pipes not connected with the other systems.

**FIRE DEPARTMENT.** Three Second-class Steamers, Five independent Hose Companies, 15,000 feet of Hose, said to be in good order, Two Hook and Ladder Trucks, Protective Company, Two men in each Company under full pay, other members partly paid.

Fire Alarm Telegraph. 51 Stations.

## INDEX.

### STREETS.

Abbott, A	19
Adams, A	1-17
Ames, A	6-87
Andover, A	88-184
Andrews, cor. Lawrence, A	1-40
Anne, A	25
Appleton, A	5
Arch, A	1-63
Auburn, A	20
Bartlett, cor. High St. Square, B	3
Bay State Avenue, B	17
Borden Court, B	3
Bowditch, B	16
Branch, B	1-18
Bridge, B	1-42
Broadway, B	1-150
Brooks Place, B	11
Brown, B	3
Burns, B	21
Cabot, B	1-41
Cady, B	18
Carlton, B	12
Carolin Court, B	3
Castle Court, B	10
Cedar, B	21
Central, B	1-89
Chapel, B	41-110
Charles, B	112-155
Chelmsford, B	1-50
Chestnut, B	42-109
Church, B	19-43
City Hall Avenue, B	1-23
Clark Court, B	20-26
Colburn, B	1-87
Common, B	2-104
Congress, B	1-39
Cottage, B	1-50
Court, B	1-50
Chambers, B	2-51
Chapel, B	52-72
Charles, B	1-12
Chelmsford, B	41-110
Chestnut, B	112-155
Church, B	1-50
City Hall Avenue, B	42-109
Clark Court, B	19-43
Colburn, B	1-87
Common, B	2-104
Congress, B	1-39
Cottage, B	1-50
Court, B	1-50
Chambers, B	2-51
Chapel, B	52-72
Charles, B	1-12
Chelmsford, B	41-110
Chestnut, B	112-155
Church, B	1-50
City Hall Avenue, B	42-109
Clark Court, B	19-43
Colburn, B	1-87
Common, B	2-104
Congress, B	1-39
Cottage, B	1-50
Court, B	1-50
Chambers, B	2-51
Chapel, B	52-72
Charles, B	1-12
Chelmsford, B	41-110
Chestnut, B	112-155
Church, B	1-50
City Hall Avenue, B	42-109
Clark Court, B	19-43
Colburn, B	1-87
Common, B	2-104
Congress, B	1-39
Cottage, B	1-50
Court, B	1-50
Chambers, B	2-51
Chapel, B	52-72
Charles, B	1-12
Chelmsford, B	41-110
Chestnut, B	112-155
Church, B	1-50
City Hall Avenue, B	42-109
Clark Court, B	19-43
Colburn, B	1-87
Common, B	2-104
Congress, B	1-39
Cottage, B	1-50
Court, B	1-50
Chambers, B	2-51
Chapel, B	52-72
Charles, B	1-12
Chelmsford, B	41-110
Chestnut, B	112-155
Church, B	1-50
City Hall Avenue, B	42-109
Clark Court, B	19-43
Colburn, B	1-87
Common, B	2-104
Congress, B	1-39
Cottage, B	1-50
Court, B	1-50
Chambers, B	2-51
Chapel, B	52-72
Charles, B	1-12
Chelmsford, B	41-110
Chestnut, B	112-155
Church, B	1-50
City Hall Avenue, B	42-109
Clark Court, B	19-43
Colburn, B	1-87
Common, B	2-104
Congress, B	1-39
Cottage, B	1-50
Court, B	1-50
Chambers, B	2-51
Chapel, B	52-72
Charles, B	1-12
Chelmsford, B	41-110
Chestnut, B	112-155
Church, B	1-50
City Hall Avenue, B	42-109
Clark Court, B	19-43
Colburn, B	1-87
Common, B	2-104
Congress, B	1-39
Cottage, B	1-50
Court, B	1-50
Chambers, B	2-51
Chapel, B	52-72
Charles, B	1-12
Chelmsford, B	41-110
Chestnut, B	112-155
Church, B	1-50
City Hall Avenue, B	42-109
Clark Court, B	19-43
Colburn, B	1-87
Common, B	2-104
Congress, B	1-39
Cottage, B	1-50
Court, B	1-50
Chambers, B	2-51
Chapel, B	52-72
Charles, B	1-12
Chelmsford, B	41-110
Chestnut, B	112-155
Church, B	1-50
City Hall Avenue, B	42-109
Clark Court, B	19-43
Colburn, B	1-87
Common, B	2-104
Congress, B	1-39
Cottage, B	1-50
Court, B	1-50
Chambers, B	2-51
Chapel, B	52-72
Charles, B	1-12
Chelmsford, B	41-110
Chestnut, B	112-155
Church, B	1-50
City Hall Avenue, B	42-109
Clark Court, B	19-43
Colburn, B	1-87
Common, B	2-104
Congress, B	1-39
Cottage, B	1-50
Court, B	1-50
Chambers, B	2-51
Chapel, B	52-72
Charles, B	1-12
Chelmsford, B	41-110
Chestnut, B	112-155
Church, B	1-50
City Hall Avenue, B	42-109
Clark Court, B	19-43
Colburn, B	1-87
Common, B	2-104
Congress, B	1-39
Cottage, B	1-50
Court, B	1-50
Chambers, B	2-51
Chapel, B	52-72
Charles, B	1-12
Chelmsford, B	41-110
Chestnut, B	112-155
Church, B	1-50
City Hall Avenue, B	42-109
Clark Court, B	19-43
Colburn, B	1-87
Common, B	2-104
Congress, B	1-39
Cottage, B	1-50
Court, B	1-50
Chambers, B	2-51
Chapel, B	52-72
Charles, B	1-12
Chelmsford, B	41-110
Chestnut, B	112-155
Church, B	1-50
City Hall Avenue, B	42-109
Clark Court, B	19-43
Colburn, B	1-87
Common, B	2-104
Congress, B	1-39
Cottage, B	1-50
Court, B	1-50
Chambers, B	2-51
Chapel, B	52-72
Charles, B	1-12
Chelmsford, B	41-110
Chestnut, B	112-155
Church, B	1-50
City Hall Avenue, B	42-109
Clark Court, B	19-43
Colburn, B	1-87
Common, B	2-104
Congress, B	1-39
Cottage, B	1-50
Court, B	1-50
Chambers, B	2-51
Chapel, B	52-72
Charles, B	1-12
Chelmsford, B	41-110
Chestnut, B	112-155
Church, B	1-50
City Hall Avenue, B	42-109
Clark Court, B	19-43
Colburn, B	1-87
Common, B	2-104
Congress, B	1-39
Cottage, B	1-50
Court, B	1-50
Chambers, B	2-51
Chapel, B	52-72
Charles, B	1-12
Chelmsford, B	41-110
Chestnut, B	112-155
Church, B	1-50
City Hall Avenue, B	42-109
Clark Court, B	19-43
Colburn, B	1-87
Common, B	2-104
Congress, B	1-39
Cottage, B	1-50
Court, B	1-50
Chambers, B	2-51
Chapel, B	52-72
Charles, B	1-12
Chelmsford, B	41-110
Chestnut, B	112-155
Church, B	1-50
City Hall Avenue, B	42-109
Clark Court, B	19-43
Colburn, B	1-87
Common, B	2-104
Congress, B	1-39
Cottage, B	1-50
Court, B	1-50
Chambers, B	2-51
Chapel, B	52-72
Charles, B	1-12
Chelmsford, B	41-110
Chestnut, B	112-155
Church, B	1-50
City Hall Avenue, B	42-109
Clark Court, B	19-43
Colburn, B	1-87
Common, B	2-104
Congress, B	1-39
Cottage, B	1-50
Court, B	1-50
Chambers, B	2-51
Chapel, B	52-72
Charles, B	1-12
Chelmsford, B	41-110
Chestnut, B	112-155
Church, B	1-50
City Hall Avenue, B	42-109
Clark Court, B	19-43
Colburn, B	1-87
Common, B	2-104
Congress, B	1-39
Cottage, B	1-50
Court, B	1-50
Chambers, B	2-51
Chapel, B	52-72
Charles, B	1-12
Chelmsford, B	41-110
Chestnut, B	112-155
Church, B	1-50
City Hall Avenue, B	42-109
Clark Court, B	19-43
Colburn, B	1-87
Common, B	2-104
Congress, B	1-39
Cottage, B	1-50
Court, B	1-50
Chambers, B	2-51
Chapel, B	52-72
Charles, B	1-12
Chelmsford, B	41-110
Chestnut, B	112-155
Church, B	1-50
City Hall Avenue, B	42-109
Clark Court, B	19-43
Colburn, B	1-87
Common, B	2-104
Congress, B	1-39
Cottage, B	1-50
Court, B	1-50
Chambers, B	2-51
Chapel, B	52-72
Charles, B	1-12
Chelmsford, B	41-110
Chestnut, B	112-155
Church, B	1-50
City Hall Avenue, B	42-109
Clark Court, B	19-43
Colburn, B	1-87
Common, B	2-104
Congress, B	1-39
Cottage, B	1-50
Court, B	1-50
Chambers, B	2-51
Chapel, B	52-72
Charles, B	1-12
Chelmsford, B	41-110
Chestnut, B	112-155
Church, B	1-50
City Hall Avenue, B	42-109
Clark Court, B	19-43
Colburn, B	1-87
Common, B	2-104
Congress, B	1-39
Cottage, B	1-50
Court, B	1-50
Chambers, B	2-51
Chapel, B	52-72
Charles, B	1-12
Chelmsford, B	41-110
Chestnut, B	112-155
Church, B	1-50
City Hall Avenue, B	42-109
Clark Court, B	19-43
Colburn, B	1-87
Common, B	2-104
Congress, B	1-39
Cottage, B	1-50
Court, B	1-50
Chambers, B	2-51
Chapel, B	52-72
Charles, B	1-12
Chelmsford, B	41-110
Chestnut, B	112-155
Church, B	1-50
City Hall Avenue, B	42-109
Clark Court, B	19-43
Colburn, B	1-87
Common, B	2-104
Congress, B	1-39
Cottage, B	1-50
Court, B	1-50
Chambers, B	2-51
Chapel, B	52-72
Charles, B	1-12
Chelmsford, B	41-110
Chestnut, B	112-155
Church, B	1-50
City Hall Avenue, B	42-109
Clark Court, B	19-43
Colburn, B	1-87
Common, B	2-104
Congress, B	1-39
Cottage, B	1-50
Court, B	1-50
Chambers, B	2-51
Chapel, B	52-72
Charles, B	1-12
Chelmsford, B	41-110
Chestnut, B	112-155
Church, B	1-50
City Hall Avenue, B	42-109
Clark Court, B	19-43
Colburn, B	1-87
Common, B	2-104
Congress, B	1-39
Cottage, B	1-50
Court, B	1-50
Chambers, B	2-51
Chapel, B	52-72
Charles, B	1-12
Chelmsford, B	41-110
Chestnut, B	112-155
Church, B	1-50
City Hall Avenue, B	42-109
Clark Court, B	19-43
Colburn, B	1-87
Common, B	2-104
Congress, B	1-39
Cottage, B	1-50
Court, B	1-50
Chambers, B	2-51
Chapel, B	52-72
Charles, B	1-12
Chelmsford, B	41-110
Chestnut, B	112-155
Church, B	1-50
City Hall Avenue, B	42-109
Clark Court, B	19-43
Colburn, B	1-87
Common, B	2-104
Congress, B	1-39
Cottage, B	1-50
Court, B	1-50
Chambers, B	2-51
Chapel, B	52-72
Charles, B	1-12
Chelmsford, B	41-110
Chestnut, B	112-155
Church, B	1-50
City Hall Avenue, B	42-109
Clark Court, B	19-43
Colburn, B	1-87
Common, B	2-104
Congress, B	1-39
Cottage, B	1-50
Court, B	1-50
Chambers, B	2-51
Chapel, B	52-72
Charles, B	1-12
Chelmsford, B	41-110
Chestnut, B	112-155
Church, B	1-50
City Hall Avenue, B	42-109
Clark Court, B	19-43
Colburn, B	1-87
Common, B	2-104
Congress, B	1-39
Cottage, B	1-50
Court, B	1-50
Chambers, B	2-51
Chapel, B	52-72
Charles, B	1-12
Chelmsford, B	41-110
Chestnut, B	112-155
Church, B	1-50
City Hall Avenue, B	42-109
Clark Court, B	19-43
Colburn, B	1-87
Common, B	2-104
Congress, B	1-39
Cottage, B	1-50
Court, B	1-50
Chambers, B	2-51
Chapel, B	52-72
Charles, B	1-12
Chelmsford, B	41-110
Chestnut, B	112-155
Church, B	1-50
City Hall Avenue, B	42-109
Clark Court, B	19-43
Colburn, B	1-87
Common, B	2-104
Congress, B	1-39
Cottage, B	1-50
Court, B	1-50
Chambers, B	2-51
Chapel, B	52-72
Charles, B	1-12
Chelmsford, B	41-110
Chestnut, B	112-155
Church, B	1-50
City Hall Avenue, B	42-109
Clark Court, B	19-43
Colburn, B	1-87
Common, B	2-104
Congress, B	1-39
Cottage, B	1-50
Court, B	1-50
Chambers, B	2-51
Chapel, B	52-72
Charles, B	1-12
Chelmsford, B	41-110
Chestnut, B	112-155
Church, B	1-50
City Hall Avenue, B	4



**NOTICE.**—The SANBORN MAP & PUBLISHING CO. (Limited) will Loan, to parties purchasing one copy of this map, a Duplicate, with the mutual understanding and agreement that it is to be used exclusively by their General or Local Agent, and with the further agreement that, if not so used, one of the two copies will be returned to said Company.

**KEY**

	FIRE WALL BINAR ROOF
	FRAME PARTITION
	OPENING WITH IRON DOOR
	WINDOW WITH SHUTTERS
	STABLE
	WINDOW IN 1ST STORY
	WINDOW IN 2ND STORY
	WINDOW IN 3RD STORY
	WINDOW IN 4TH STORY
	WINDOW IN 5TH STORY
	WINDOW IN 6TH STORY
	WINDOW IN 7TH STORY
	WINDOW IN 8TH STORY
	WINDOW IN 9TH STORY
	WINDOW IN 10TH STORY
	WINDOW IN 11TH STORY
	WINDOW IN 12TH STORY
	WINDOW IN 13TH STORY
	WINDOW IN 14TH STORY
	WINDOW IN 15TH STORY
	WINDOW IN 16TH STORY
	WINDOW IN 17TH STORY
	WINDOW IN 18TH STORY
	WINDOW IN 19TH STORY
	WINDOW IN 20TH STORY
	WINDOW IN 21ST STORY
	WINDOW IN 22ND STORY
	WINDOW IN 23RD STORY
	WINDOW IN 24TH STORY
	WINDOW IN 25TH STORY
	WINDOW IN 26TH STORY
	WINDOW IN 27TH STORY
	WINDOW IN 28TH STORY
	WINDOW IN 29TH STORY
	WINDOW IN 30TH STORY
	WINDOW IN 31ST STORY
	WINDOW IN 32ND STORY
	WINDOW IN 33RD STORY
	WINDOW IN 34TH STORY
	WINDOW IN 35TH STORY
	WINDOW IN 36TH STORY
	WINDOW IN 37TH STORY
	WINDOW IN 38TH STORY
	WINDOW IN 39TH STORY
	WINDOW IN 40TH STORY
	WINDOW IN 41ST STORY
	WINDOW IN 42ND STORY
	WINDOW IN 43RD STORY
	WINDOW IN 44TH STORY
	WINDOW IN 45TH STORY
	WINDOW IN 46TH STORY
	WINDOW IN 47TH STORY
	WINDOW IN 48TH STORY
	WINDOW IN 49TH STORY
	WINDOW IN 50TH STORY
	WINDOW IN 51ST STORY
	WINDOW IN 52ND STORY
	WINDOW IN 53RD STORY
	WINDOW IN 54TH STORY
	WINDOW IN 55TH STORY
	WINDOW IN 56TH STORY
	WINDOW IN 57TH STORY
	WINDOW IN 58TH STORY
	WINDOW IN 59TH STORY
	WINDOW IN 60TH STORY
	WINDOW IN 61ST STORY
	WINDOW IN 62ND STORY
	WINDOW IN 63RD STORY
	WINDOW IN 64TH STORY
	WINDOW IN 65TH STORY
	WINDOW IN 66TH STORY
	WINDOW IN 67TH STORY
	WINDOW IN 68TH STORY
	WINDOW IN 69TH STORY
	WINDOW IN 70TH STORY
	WINDOW IN 71ST STORY
	WINDOW IN 72ND STORY
	WINDOW IN 73RD STORY
	WINDOW IN 74TH STORY
	WINDOW IN 75TH STORY
	WINDOW IN 76TH STORY
	WINDOW IN 77TH STORY
	WINDOW IN 78TH STORY
	WINDOW IN 79TH STORY
	WINDOW IN 80TH STORY
	WINDOW IN 81ST STORY
	WINDOW IN 82ND STORY
	WINDOW IN 83RD STORY
	WINDOW IN 84TH STORY
	WINDOW IN 85TH STORY
	WINDOW IN 86TH STORY
	WINDOW IN 87TH STORY
	WINDOW IN 88TH STORY
	WINDOW IN 89TH STORY
	WINDOW IN 90TH STORY
	WINDOW IN 91ST STORY
	WINDOW IN 92ND STORY
	WINDOW IN 93RD STORY
	WINDOW IN 94TH STORY
	WINDOW IN 95TH STORY
	WINDOW IN 96TH STORY
	WINDOW IN 97TH STORY
	WINDOW IN 98TH STORY
	WINDOW IN 99TH STORY
	WINDOW IN 100TH STORY

**AYERS CITY**

CEMETERY  
AGRICULTURAL FAIR GROUNDS.

2

HOLLIS OR W. THIRD

COBURN

RIVER

FRONT

THIRD

SECOND

FIRST

BRIDGE

RIVER

River

Merrimack

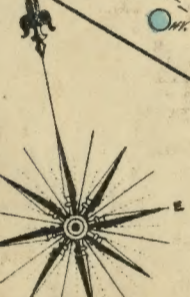
Central Bridge

BELOW

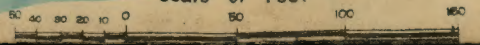
FRONT SEE

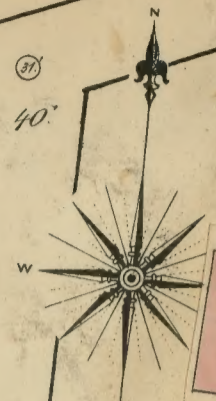
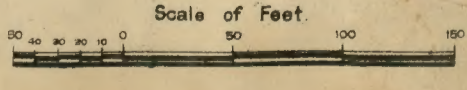
READ

No exp. 10/50



Scale of Feet





WATCHMAN & CLOCK - 8 STATIONS - ONE CHASE & RAMP - ONE FEET PIPE WITH 25' HOSE ATTACHED TO EACH FLOOR 200' 25' HOSE HEAT STOVE & STOVES IN B. LIGHTS GAS - EACH FLOOR & ATTIC - FILLED FIRE PAILS & HAND GRENADERS IN EACH ROOM -

SEE

SHEET

119 4

SEE SHEET

119 4

Passage Neg.

Detached Fr. Dngs.

No exposure.

MERRIMACK RIVER.  
MASSACHUSETTS MUTUAL RISK MILLS.  
Twisting Wheel Ho.  
Weaving 18 x 22  
Spinning 32, 42 x 30  
Caring 6 1/2

WHITTIER COTTON MILL & TWINE MFG  
TWISTING & DOUBLING 18. 19. 20. 21. 22. 23. 24. 25. 26. 27. 28. 29. 30. 31. 32. 33. 34. 35. 36. 37. 38. 39. 40. 41. 42. 43. 44. 45. 46. 47. 48. 49. 50. 51. 52. 53. 54. 55. 56. 57. 58. 59. 60. 61. 62. 63. 64. 65. 66. 67. 68. 69. 70. 71. 72. 73. 74. 75. 76. 77. 78. 79. 80. 81. 82. 83. 84. 85. 86. 87. 88. 89. 90. 91. 92. 93. 94. 95. 96. 97. 98. 99. 100. 101. 102. 103. 104. 105. 106. 107. 108. 109. 110. 111. 112. 113. 114. 115. 116. 117. 118. 119. 120. 121. 122. 123. 124. 125. 126. 127. 128. 129. 130. 131. 132. 133. 134. 135. 136. 137. 138. 139. 140. 141. 142. 143. 144. 145. 146. 147. 148. 149. 150. 151. 152. 153. 154. 155. 156. 157. 158. 159. 160. 161. 162. 163. 164. 165. 166. 167. 168. 169. 170. 171. 172. 173. 174. 175. 176. 177. 178. 179. 180. 181. 182. 183. 184. 185. 186. 187. 188. 189. 190. 191. 192. 193. 194. 195. 196. 197. 198. 199. 200. 201. 202. 203. 204. 205. 206. 207. 208. 209. 210. 211. 212. 213. 214. 215. 216. 217. 218. 219. 220. 221. 222. 223. 224. 225. 226. 227. 228. 229. 230. 231. 232. 233. 234. 235. 236. 237. 238. 239. 240. 241. 242. 243. 244. 245. 246. 247. 248. 249. 250. 251. 252. 253. 254. 255. 256. 257. 258. 259. 260. 261. 262. 263. 264. 265. 266. 267. 268. 269. 270. 271. 272. 273. 274. 275. 276. 277. 278. 279. 280. 281. 282. 283. 284. 285. 286. 287. 288. 289. 290. 291. 292. 293. 294. 295. 296. 297. 298. 299. 300. 301. 302. 303. 304. 305. 306. 307. 308. 309. 310. 311. 312. 313. 314. 315. 316. 317. 318. 319. 320. 321. 322. 323. 324. 325. 326. 327. 328. 329. 330. 331. 332. 333. 334. 335. 336. 337. 338. 339. 340. 341. 342. 343. 344. 345. 346. 347. 348. 349. 350. 351. 352. 353. 354. 355. 356. 357. 358. 359. 360. 361. 362. 363. 364. 365. 366. 367. 368. 369. 370. 371. 372. 373. 374. 375. 376. 377. 378. 379. 380. 381. 382. 383. 384. 385. 386. 387. 388. 389. 390. 391. 392. 393. 394. 395. 396. 397. 398. 399. 400. 401. 402. 403. 404. 405. 406. 407. 408. 409. 410. 411. 412. 413. 414. 415. 416. 417. 418. 419. 420. 421. 422. 423. 424. 425. 426. 427. 428. 429. 430. 431. 432. 433. 434. 435. 436. 437. 438. 439. 440. 441. 442. 443. 444. 445. 446. 447. 448. 449. 450. 451. 452. 453. 454. 455. 456. 457. 458. 459. 460. 461. 462. 463. 464. 465. 466. 467. 468. 469. 470. 471. 472. 473. 474. 475. 476. 477. 478. 479. 480. 481. 482. 483. 484. 485. 486. 487. 488. 489. 490. 491. 492. 493. 494. 495. 496. 497. 498. 499. 500. 501. 502. 503. 504. 505. 506. 507. 508. 509. 510. 511. 512. 513. 514. 515. 516. 517. 518. 519. 520. 521. 522. 523. 524. 525. 526. 527. 528. 529. 530. 531. 532. 533. 534. 535. 536. 537. 538. 539. 540. 541. 542. 543. 544. 545. 546. 547. 548. 549. 550. 551. 552. 553. 554. 555. 556. 557. 558. 559. 560. 561. 562. 563. 564. 565. 566. 567. 568. 569. 570. 571. 572. 573. 574. 575. 576. 577. 578. 579. 580. 581. 582. 583. 584. 585. 586. 587. 588. 589. 590. 591. 592. 593. 594. 595. 596. 597. 598. 599. 600. 601. 602. 603. 604. 605. 606. 607. 608. 609. 610. 611. 612. 613. 614. 615. 616. 617. 618. 619. 620. 621. 622. 623. 624. 625. 626. 627. 628. 629. 630. 631. 632. 633. 634. 635. 636. 637. 638. 639. 640. 641. 642. 643. 644. 645. 646. 647. 648. 649. 650. 651. 652. 653. 654. 655. 656. 657. 658. 659. 660. 661. 662. 663. 664. 665. 666. 667. 668. 669. 670. 671. 672. 673. 674. 675. 676. 677. 678. 679. 680. 681. 682. 683. 684. 685. 686. 687. 688. 689. 690. 691. 692. 693. 694. 695. 696. 697. 698. 699. 700. 701. 702. 703. 704. 705. 706. 707. 708. 709. 710. 711. 712. 713. 714. 715. 716. 717. 718. 719. 720. 721. 722. 723. 724. 725. 726. 727. 728. 729. 730. 731. 732. 733. 734. 735. 736. 737. 738. 739. 740. 741. 742. 743. 744. 745. 746. 747. 748. 749. 750. 751. 752. 753. 754. 755. 756. 757. 758. 759. 760. 761. 762. 763. 764. 765. 766. 767. 768. 769. 770. 771. 772. 773. 774. 775. 776. 777. 778. 779. 780. 781. 782. 783. 784. 785. 786. 787. 788. 789. 790. 791. 792. 793. 794. 795. 796. 797. 798. 799. 800. 801. 802. 803. 804. 805. 806. 807. 808. 809. 810. 811. 812. 813. 814. 815. 816. 817. 818. 819. 820. 821. 822. 823. 824. 825. 826. 827. 828. 829. 830. 831. 832. 833. 834. 835. 836. 837. 838. 839. 840. 841. 842. 843. 844. 845. 846. 847. 848. 849. 850. 851. 852. 853. 854. 855. 856. 857. 858. 859. 860. 861. 862. 863. 864. 865. 866. 867. 868. 869. 870. 871. 872. 873. 874. 875. 876. 877. 878. 879. 880. 881. 882. 883. 884. 885. 886. 887. 888. 889. 890. 891. 892. 893. 894. 895. 896. 897. 898. 899. 900. 901. 902. 903. 904. 905. 906. 907. 908. 909. 910. 911. 912. 913. 914. 915. 916. 917. 918. 919. 920. 921. 922. 923. 924. 925. 926. 927. 928. 929. 930. 931. 932. 933. 934. 935. 936. 937. 938. 939. 940. 941. 942. 943. 944. 945. 946. 947. 948. 949. 950. 951. 952. 953. 954. 955. 956. 957. 958. 959. 960. 961. 962. 963. 964. 965. 966. 967. 968. 969. 970. 971. 972. 973. 974. 975. 976. 977. 978. 979. 980. 981. 982. 983. 984. 985. 986. 987. 988. 989. 990. 991. 992. 993. 994. 995. 996. 997. 998. 999. 1000. 1001. 1002. 1003. 1004. 1005. 1006. 1007. 1008. 1009. 1010. 1011. 1012. 1013. 1014. 1015. 1016. 1017. 1018. 1019. 1020. 1021. 1022. 1023. 1024. 1025. 1026. 1027. 1028. 1029. 1030. 1031. 1032. 1033. 1034. 1035. 1036. 1037. 1038. 1039. 1040. 1041. 1042. 1043. 1044. 1045. 1046. 1047. 1048. 1049. 1050. 1051. 1052. 1053. 1054. 1055. 1056. 1057. 1058. 1059. 1060. 1061. 1062. 1063. 1064. 1065. 1066. 1067. 1068. 1069. 1070. 1071. 1072. 1073. 1074. 1075. 1076. 1077. 1078. 1079. 1080. 1081. 1082. 1083. 1084. 1085. 1086. 1087. 1088. 1089. 1090. 1091. 1092. 1093. 1094. 1095. 1096. 1097. 1098. 1099. 1100. 1101. 1102. 1103. 1104. 1105. 1106. 1107. 1108. 1109. 1110. 1111. 1112. 1113. 1114. 1115. 1116. 1117. 1118. 1119. 1120. 1121. 1122. 1123. 1124. 1125. 1126. 1127. 1128. 1129. 1130. 1131. 1132. 1133. 1134. 1135. 1136. 1137. 1138. 1139. 1140. 1141. 1142. 1143. 1144. 1145. 1146. 1147. 1148. 1149. 1150. 1151. 1152. 1153. 1154. 1155. 1156. 1157. 1158. 1159. 1160. 1161. 1162. 1163. 1164. 1165. 1166. 1167. 1168. 1169. 1170. 1171. 1172. 1173. 1174. 1175. 1176. 1177. 1178. 1179. 1180. 1181. 1182. 1183. 1184. 1185. 1186. 1187. 1188. 1189. 1190. 1191. 1192. 1193. 1194. 1195. 1196. 1197. 1198. 1199. 1200. 1201. 1202. 1203. 1204. 1205. 1206. 1207. 1208. 1209. 1210. 1211. 1212. 1213. 1214. 1215. 1216. 1217. 1218. 1219. 1220. 1221. 1222. 1223. 1224. 1225. 1226. 1227. 1228. 1229. 1230. 1231. 1232. 1233. 1234. 1235. 1236. 1237. 1238. 1239. 1240. 1241. 1242. 1243. 1244. 1245. 1246. 1247. 1248. 1249. 1250. 1251. 1252. 1253. 1254. 1255. 1256. 1257. 1258. 1259. 1260. 1261. 1262. 1263. 1264. 1265. 1266. 1267. 1268. 1269. 1270. 1271. 1272. 1273. 1274. 1275. 1276. 1277. 1278. 1279. 1280. 1281. 1282. 1283. 1284. 1285. 1286. 1287. 1288. 1289. 1290. 1291. 1292. 1293. 1294. 1295. 1296. 1297. 1298. 1299. 1300. 1301. 1302. 1303. 1304. 1305. 1306. 1307. 1308. 1309. 1310. 1311. 1312. 1313. 1314. 1315. 1316. 1317. 1318. 1319. 1320. 1321. 1322. 1323. 1324. 1325. 1326. 1327. 1328. 1329. 1330. 1331. 1332. 1333. 1334. 1335. 1336. 1337. 1338. 1339. 1340. 1341. 1342. 1343. 1344. 1345. 1346. 1347. 1348. 1349. 1350. 1351. 1352. 1353. 1354. 1355. 1356. 1357. 1358. 1359. 1360. 1361. 1362. 1363. 1364. 1365. 1366. 1367. 1368. 1369. 1370. 1371. 1372. 1373. 1374. 1375. 1376. 1377. 1378. 1379. 1380. 1381. 1382. 1383. 1384. 1385. 1386. 1387. 1388. 1389. 1390. 1391. 1392. 1393. 1394. 1395. 1396. 1397. 1398. 1399. 1400. 1401. 1402. 1403. 1404. 1405. 1406. 1407. 1408. 1409. 1410. 1411. 1412. 1413. 1414. 1415. 1416. 1417. 1418. 1419. 1420. 1421. 1422. 1423. 1424. 1425. 1426. 1427. 1428. 1429. 1430. 1431. 1432. 1433. 1434. 1435. 1436. 1437. 1438. 1439. 1440. 1441. 1442. 1443. 1444. 1445. 1446. 1447. 1448. 1449. 1450. 1451. 1452. 1453. 1454. 1455. 1456. 1457. 1458. 1459. 1460. 1461. 1462. 1463. 1464. 1465. 1466. 1467. 1468. 1469. 1470. 1471. 1472. 1473. 1474. 1475. 1476. 1477. 1478. 1479. 1480. 1481. 1482. 1483. 1484. 1485. 1486. 1487. 1488. 1489. 1490. 1491. 1492. 1493. 1494. 1495. 1496. 1497. 1498. 1499. 1500. 1501. 1502. 1503. 1504. 1505. 1506. 1507. 1508. 1509. 1510. 1511. 1512. 1513. 1514. 1515. 1516. 1517. 1518. 1519. 1520. 1521. 1522. 1523. 1524. 1525. 1526. 1527. 1528. 1529. 1530. 1531. 1532. 1533. 1534. 1535. 1536. 1537. 1538. 1539. 1540. 1541. 1542. 1543. 1544. 1545. 1546. 1547. 1548. 1549. 1550. 1551. 1552. 1553. 1554. 1555. 1556. 1557. 1558. 1559. 1560. 1561. 1562. 1563. 1564. 1565. 1566. 1567. 1568. 1569. 1570. 1571. 1572. 1573. 1574. 1575. 1576. 1577. 1578. 1579. 1580. 1581. 1582. 1583. 1584. 1585. 1586. 1587. 1588. 1589. 1590. 1591. 1592. 1593. 1594. 1595. 1596. 1597. 1598. 1599. 1600. 1601. 1602. 1603. 1604. 1605. 1606. 1607. 1608. 1609. 1610. 1611. 1612. 1613. 1614. 1615. 1616. 1617. 1618. 1619. 1620. 1621. 1622. 1623. 1624. 1625. 1626. 1627. 1628. 1629. 1630. 1631. 1632. 1633. 1634. 1635. 1636. 1637. 1638. 1639. 1640. 1641. 1642. 1643. 1644. 1645. 1646. 1647. 1648. 1649. 1650. 1651. 1652. 1653. 1654. 1655. 1656. 1657. 1658. 1659. 1660. 1661. 1662. 1663. 1664. 1665. 1666. 1667. 1668. 1669. 1670. 1671. 1672. 1673. 1674. 1675. 1676. 1677. 1678. 1679. 1680. 1681. 1682. 1683. 1684. 1685. 1686. 1687. 1688. 1689. 1690. 1691. 1692. 1693. 1694. 1695. 1696. 1697. 1698. 1699. 1700. 1701. 1702. 1703. 1704. 1705. 1706. 1707. 1708. 1709. 1710. 1711. 1712. 1713. 1714. 1715. 1716. 1717. 1718. 1719. 1720. 1721. 1722. 1723. 1724. 1725. 1726. 1727. 1728. 1729. 1730. 1731. 1732. 1733. 1734. 1735. 1736. 1737. 1738. 1739. 1740. 1741. 1742. 1743. 1744. 1745. 1746. 1747. 1748. 1749. 1750. 1751. 1752. 1753. 1754. 1755. 1756. 1757. 1758. 1759. 1760. 1761. 1762. 1763. 1764. 1765. 1766. 1767. 1768. 1769. 1770. 1771. 1772. 1773. 1774. 1775. 1776. 1777. 1778. 1779. 1780. 1781. 1782. 1783. 1784. 1785. 1786. 1787. 1788. 1789. 1790. 1791. 1792. 1793. 1794. 1795. 1796. 1797. 1798. 1799. 1800. 1801. 1802. 1803. 1804. 1805. 1806. 1807. 1808. 1809. 1810. 1811. 1812. 1813. 1814. 1815. 1816. 1817. 1818. 1819. 1820. 1821. 1822. 1823. 1824. 1825. 1826. 1827. 1828. 1829. 1830. 1831. 1832. 1833. 1834. 1835. 1836. 1837. 1838. 1839. 1840. 1841. 1842. 1843. 1844. 1845. 1846. 1847. 1848. 1849. 1850. 1851. 1852. 1853. 1854. 1855. 1856. 1857. 1858. 1859. 1860. 1861. 1862. 1863. 1864. 1865. 1866. 1867. 1868. 1869. 1870. 1871. 1872. 1873. 1874. 1875. 1876. 1877. 1878. 1879. 1880. 1881. 1882. 1883. 1884. 1885. 1886. 1887. 1888. 1889. 1890. 1891. 1892. 1893. 1894. 1895. 1896. 1897. 1898. 1899. 1900. 1901. 1902. 1903. 1904. 1905. 1906. 1907. 1908. 1909. 1910. 1911. 1912. 1913. 1914. 1915. 1916. 1917. 1918. 1919. 1920. 1921. 1922. 1923. 1924. 1925. 1926. 1927. 1928. 1929. 1930. 1931. 1932. 1933. 1934. 1935. 1936. 1937. 1938. 1939. 1940. 1941. 1942. 1943. 1944. 1945. 1946. 1947. 1948. 1949. 1950. 1951. 1952. 1953. 1954. 1955. 1956. 1957. 1958. 1959. 1960. 1961. 1962. 1963. 1964. 1965. 1966. 1967. 1968. 1969. 1970. 1971. 1972. 1973. 1974. 1975. 1976. 1977. 1978. 1979. 1980. 1981. 1982. 1983. 1984. 1985. 1986. 1987. 1988. 1989. 1990. 1991. 1992. 1993. 1994. 1995. 1996. 1997. 1998. 1999. 2000. 2001. 2002. 2003. 2004. 2005. 2006. 2007. 2008. 2009. 2010. 2011. 2012. 2013. 2014. 2015. 2016. 2017. 2018. 2019. 2020. 2021. 2022. 2023. 2024. 2025. 2026. 2027. 2028. 2029. 2030. 2031. 2032. 2033. 2034. 2035. 2036. 2037. 2038. 2039. 2040. 2041. 2042. 2043. 2044. 2045. 2046. 2047. 2048. 2049. 2050. 2051. 2052. 2053. 2054. 2055. 2056. 2057. 2058. 2059. 2060. 2061. 2062. 2063. 2064. 2065. 2066. 2067. 2068. 2069. 2070. 2071. 2072. 2073. 2074. 2075. 2076. 2077. 2078. 2079. 2080. 2081. 2082. 2083. 2084. 2085. 2086. 2087. 2088. 2089. 2090. 2091. 2092. 2093. 2094. 2095. 2096. 2097. 2098. 2099. 2100. 2101. 2102. 2103. 2104. 2105. 2106. 2107. 2108. 2109. 2110. 2111. 2112. 2113. 2114. 2115. 2116. 2117. 2118. 2119. 2

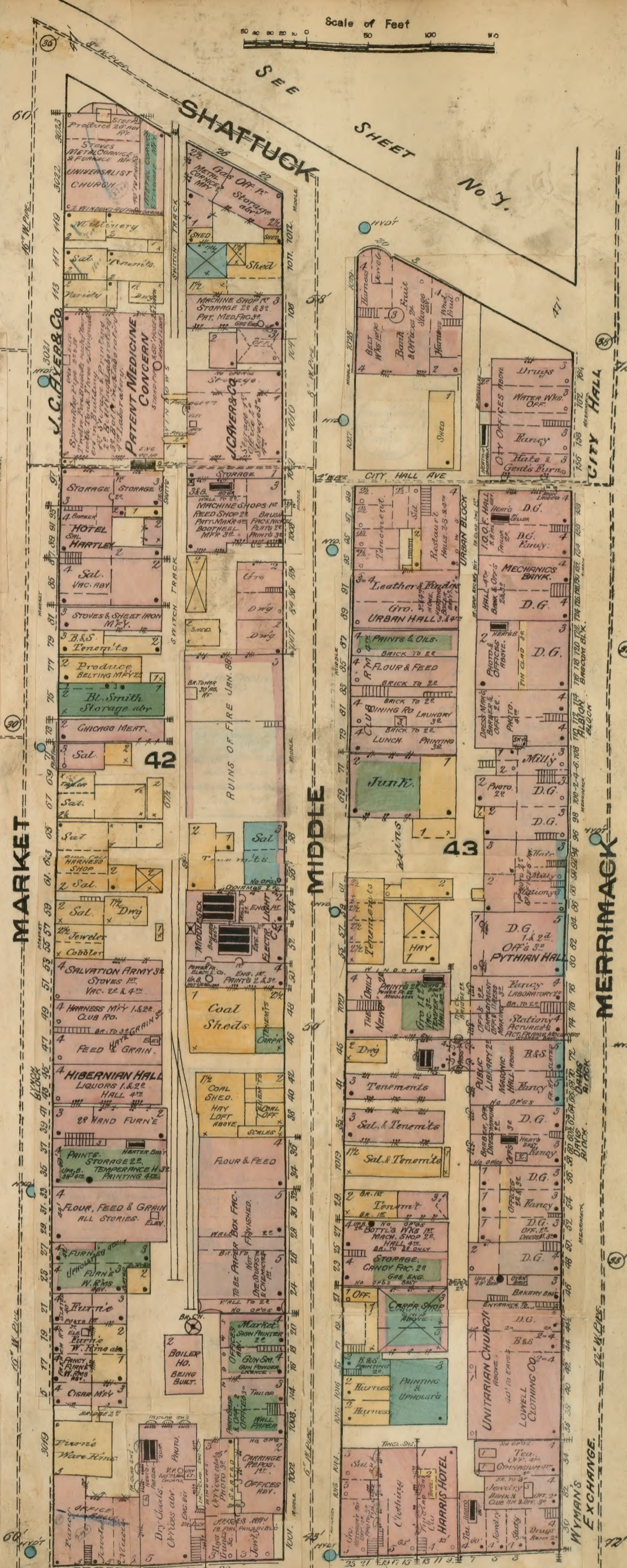




6

LOWELL

Scale of Feet  
0 20 40 60 80 100 120



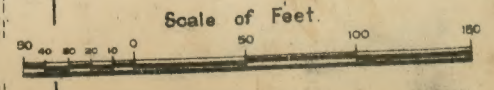
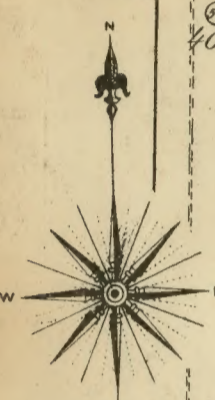
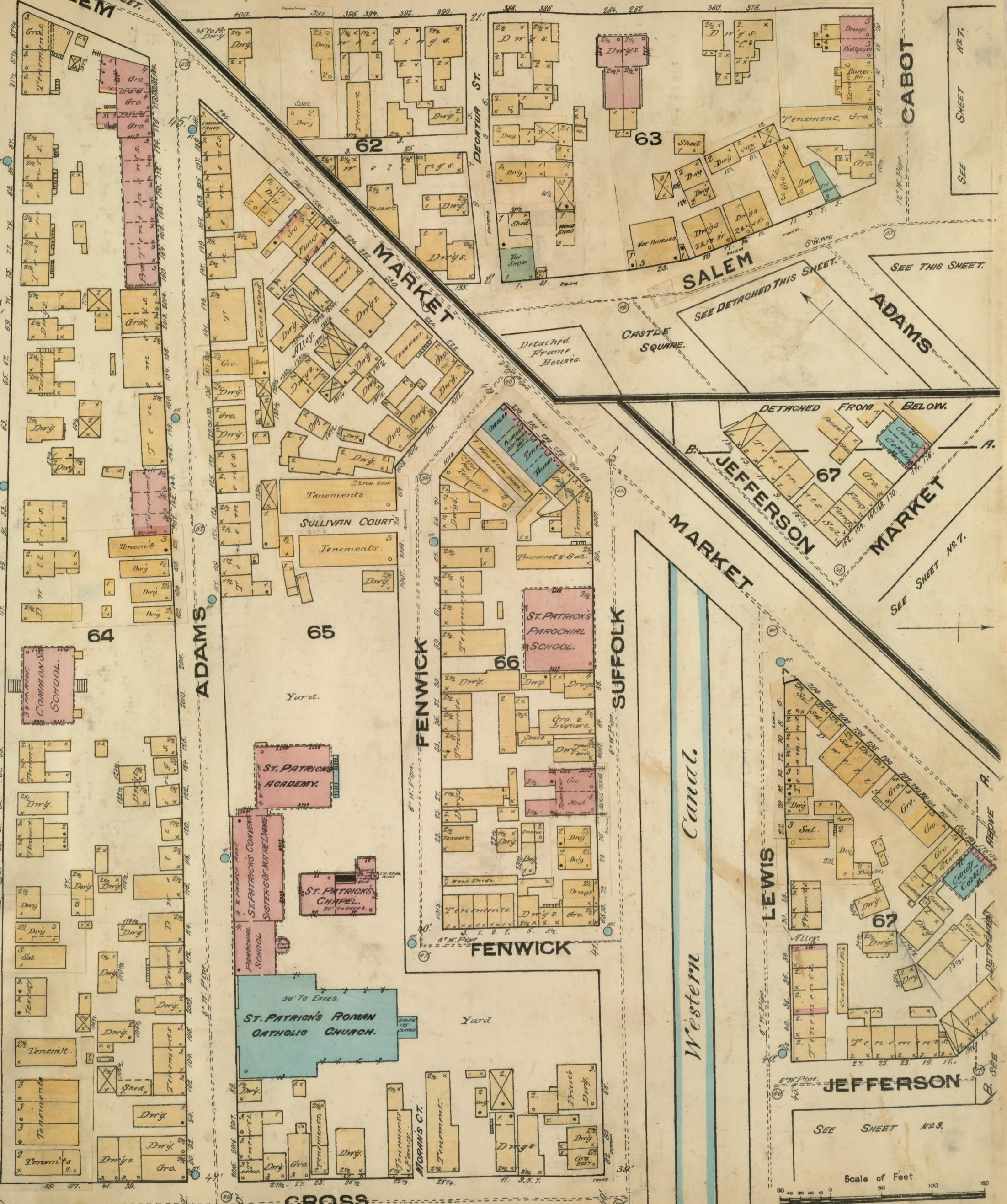




SEE DETACHED THIS SHEET. SALEM

MERRIMACK

LOWELL. CASTLE SQUARE. CLARK ST. COMMON. NORTH COMMON. ADAMS. FENWICK. CROSS. SEE SHEET



SEE SHEET NO. 9.

SEE SHEET NO. 7.

SEE THIS SHEET.

SEE SHEET NO. 7.

SEE SHEET

CROSS

FENWICK

SUFFOLK

LEWIS

JEFFERSON

ADAMS

CABOT

SALEM

MARKET

JEFFERSON

MARKET

MARKET

Western Canal.

ST. PATRICK'S PAROCHIAL SCHOOL

ST. PATRICK'S ACADEMY

ST. PATRICK'S CHAPEL

ST. PATRICK'S ROMAN CATHOLIC CHURCH

COMMON SCHOOL

ST. PATRICK'S CONVENT SISTER OF NOTRE DAME

PAROCHIAL SCHOOL

SULLIVAN COURT Tenements

65 Yard.

Yard

MORANS CT.

DRUGS

GRO.

DRUGS

DRUGS

DRUGS

DRUGS

DRUGS

DRUGS

DRUGS

Scale of Feet. 0 50 100 150

SEE

SHEET

SEE SHEET NO. 7.

SEE THIS SHEET.

SEE SHEET NO. 7.

SEE SHEET

CROSS

FENWICK

SUFFOLK

LEWIS

JEFFERSON

ADAMS

CABOT

SALEM

MARKET

JEFFERSON

MARKET

MARKET

Western Canal.

ST. PATRICK'S PAROCHIAL SCHOOL

ST. PATRICK'S ACADEMY

ST. PATRICK'S CHAPEL

ST. PATRICK'S ROMAN CATHOLIC CHURCH

COMMON SCHOOL

ST. PATRICK'S CONVENT SISTER OF NOTRE DAME

PAROCHIAL SCHOOL

SULLIVAN COURT Tenements

65 Yard.

Yard

MORANS CT.

DRUGS

GRO.

DRUGS

DRUGS

DRUGS

DRUGS

DRUGS

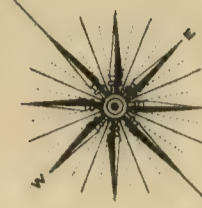
DRUGS

DRUGS

Scale of Feet. 0 50 100 150

SEE

SHEET



Scale of Feet

MARKET

JEFFERSON

WORTHEN

DUTTON

BROADWAY

DUTTON

SUFFOLK CANAL

LOCKES & CANALS CO.

WORTHEN

FLETCHER

ADAMS

73

71

70

69

68

WORTHEN ST. M.E. CHURCH

RUINS OF FIRE WORTHEN ST. BAPTIST CHURCH

SCHOOL HOUSE

LEWIS

LITTLE

LOWELL

WORTHEN ST. M.E. CHURCH

SCHOOL HOUSE

SCHOOL HOUSE

SCHOOL HOUSE

Machine Shops Tenements

Dwgs

Dwgs

Dwgs

Dwgs

ALLEY

PRIVATE WAY

ALLEY

ALLEY

ALLEY

ALLEY

ALLEY

ALLEY

ALLEY

ALLEY

ALLEY

ALLEY

ALLEY

ALLEY

ALLEY

ALLEY

ALLEY

ALLEY

ALLEY

ALLEY

ALLEY

ALLEY

ALLEY

ALLEY

ALLEY

ALLEY

ALLEY

ALLEY

ALLEY

ALLEY

ALLEY

ALLEY

ALLEY

ALLEY

ALLEY

ALLEY

ALLEY

ALLEY

ALLEY

ALLEY

ALLEY

ALLEY

ALLEY

ALLEY

ALLEY

ALLEY

ALLEY

ALLEY

ALLEY

ALLEY

ALLEY

ALLEY

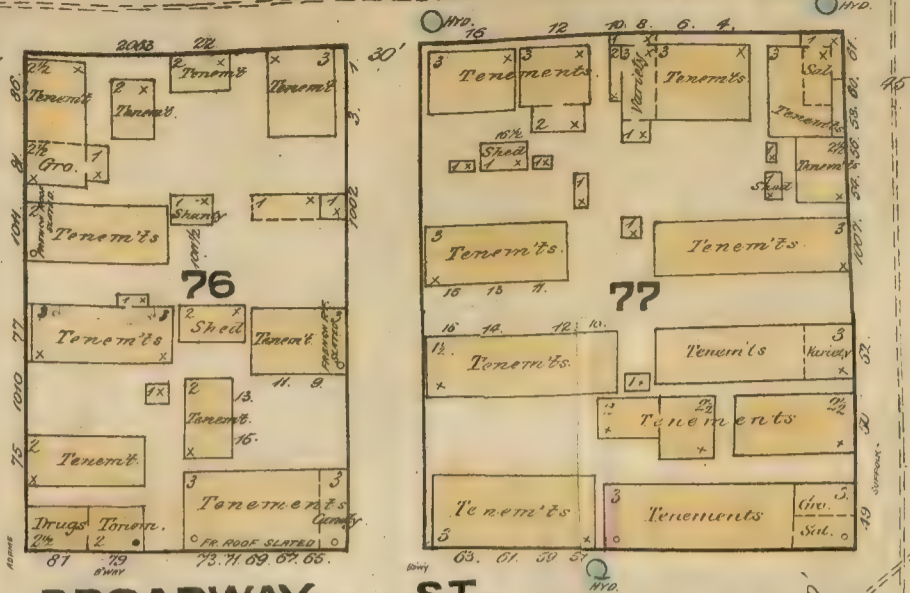
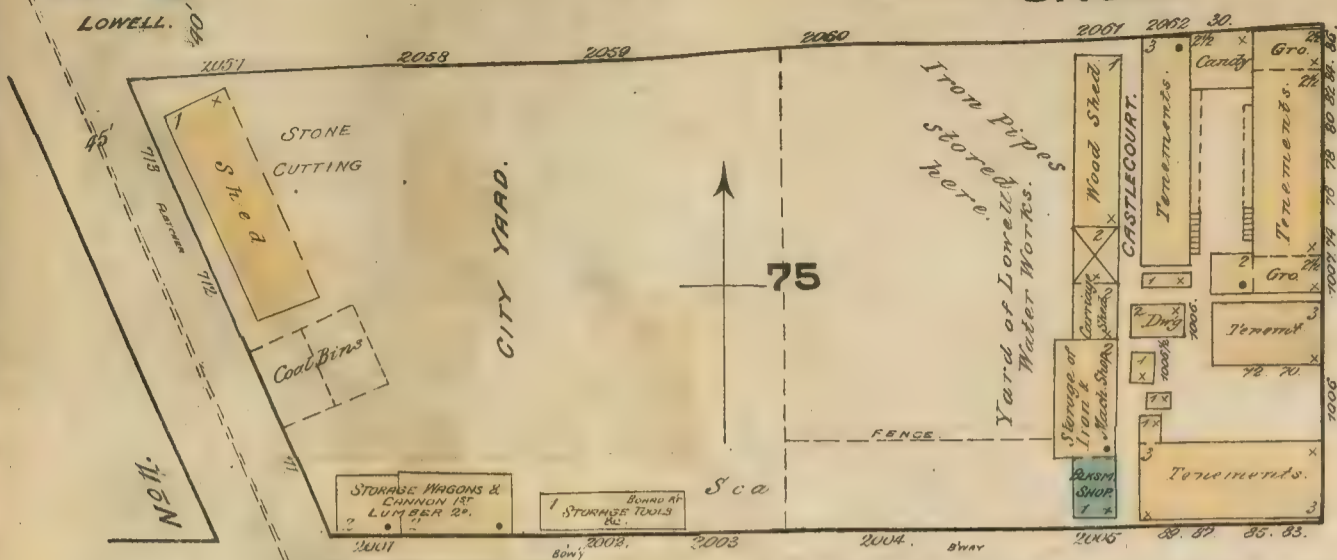
ALLEY

ALLEY

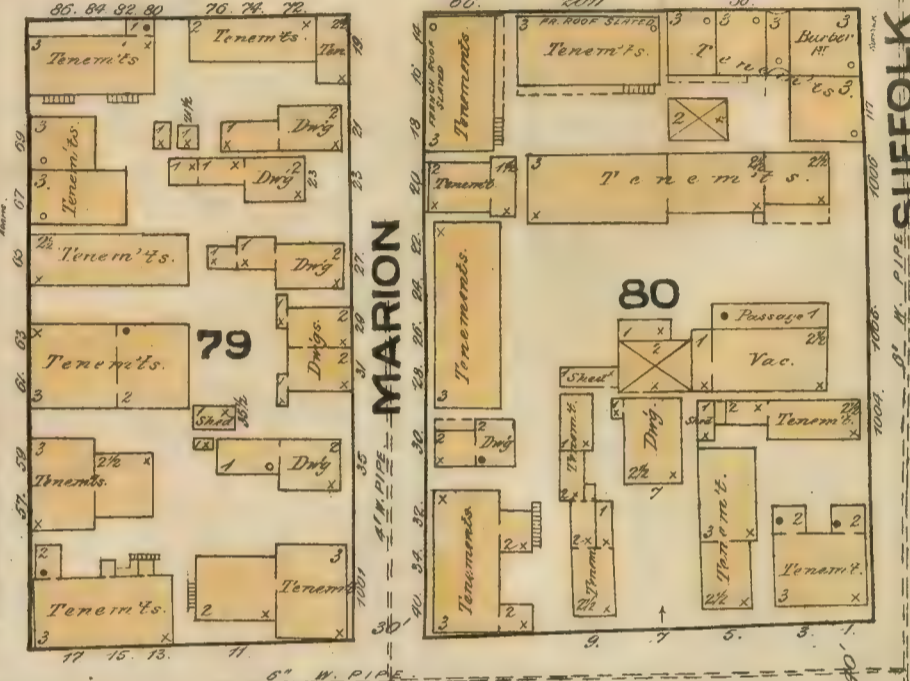
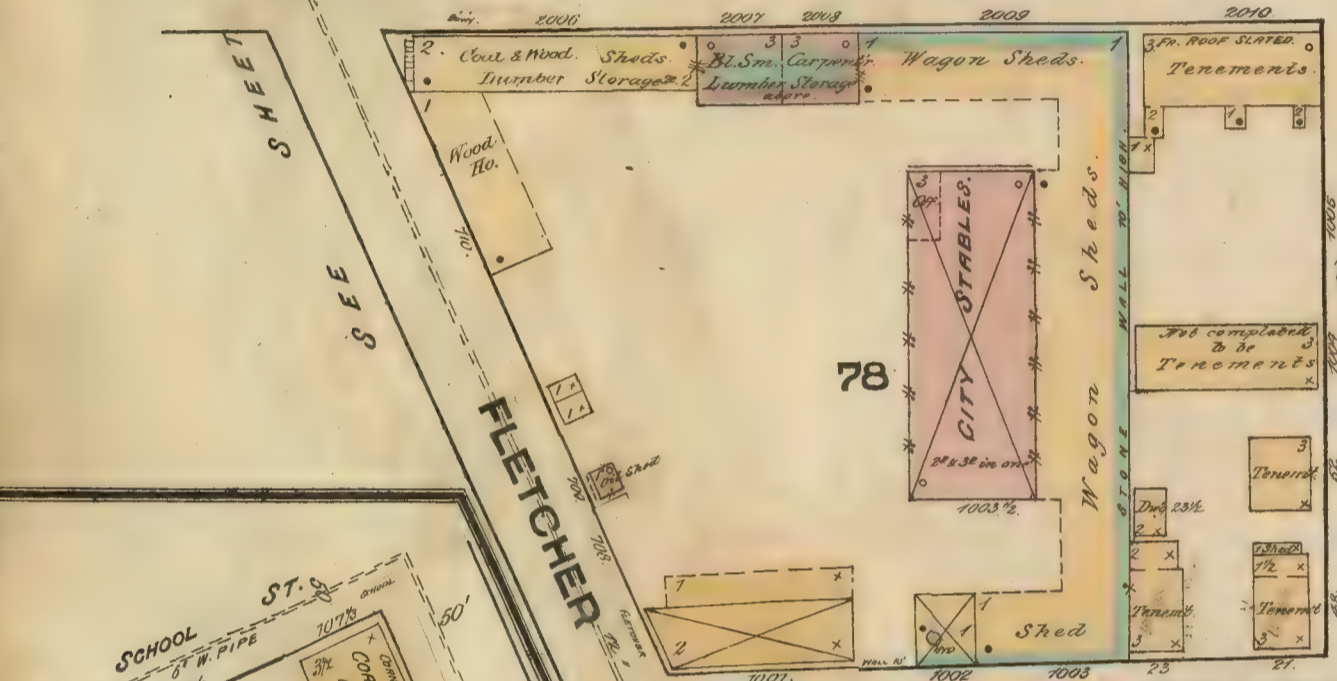
ALLEY

CROSS

6" W. PIPE



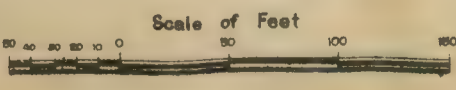
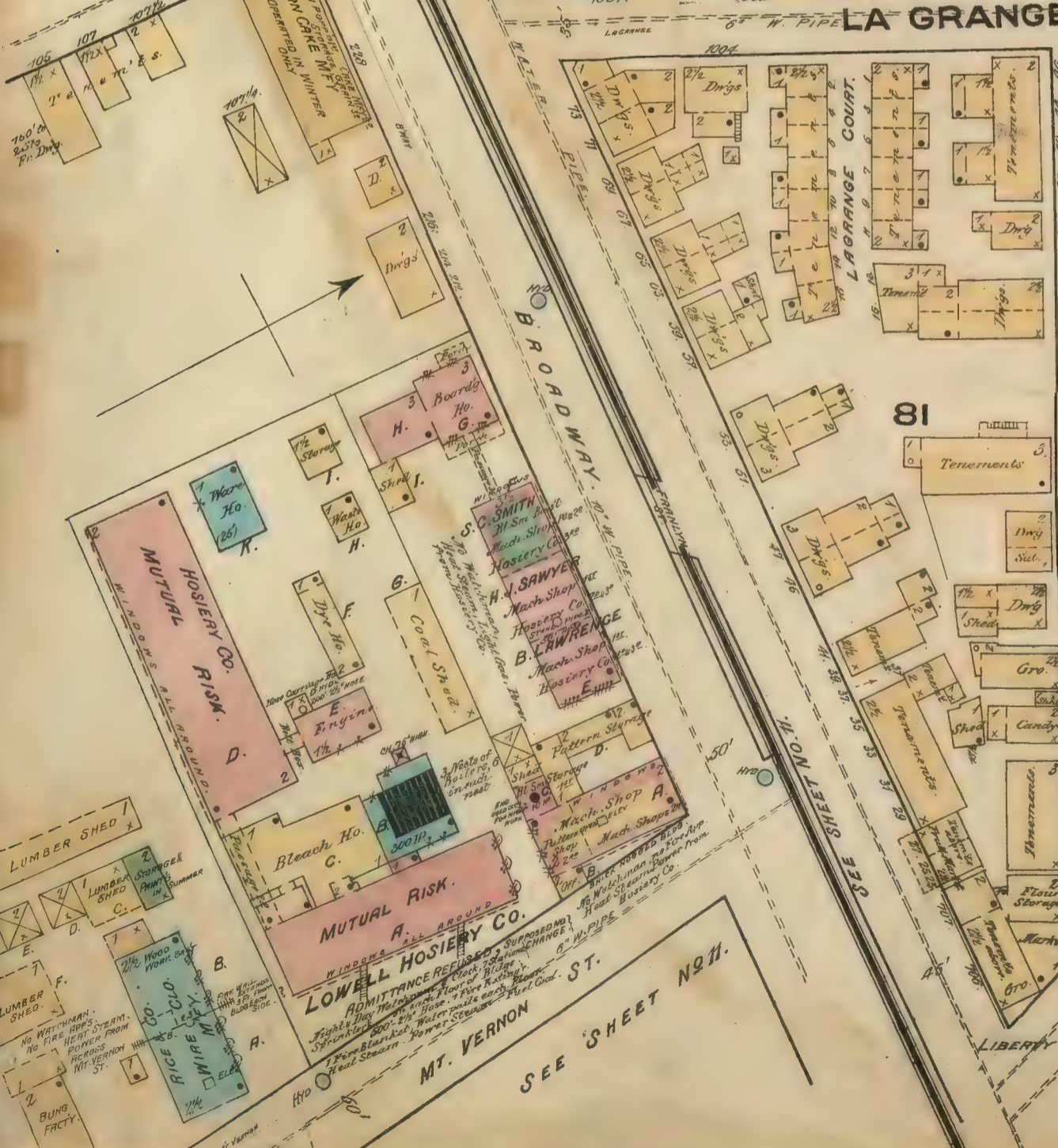
BROADWAY ST.



ADAMS

MARION

SUFFOLK





SEE SHEET No 10.

MT. VERNON

Scattered Lumber.

SEE SHEET No 12.

SEE SHEET No 13

Rock Str.

FLETCHER STR

SEE SHEET

No 10.

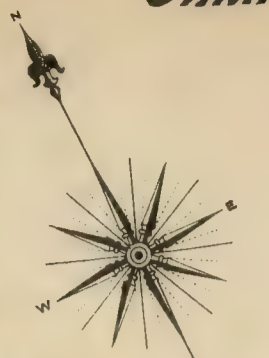
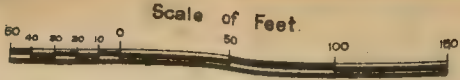
Scale of Feet.

No 13.

DETACHED SHEET  
SEE THIS  
Mill of kindling  
Wood Piles

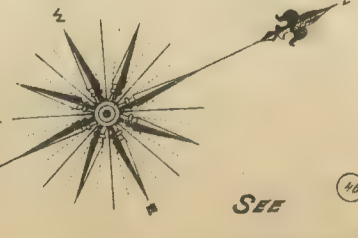
J. T. WILSON  
HANDLING WOOD

PANTUCKET CANAL.



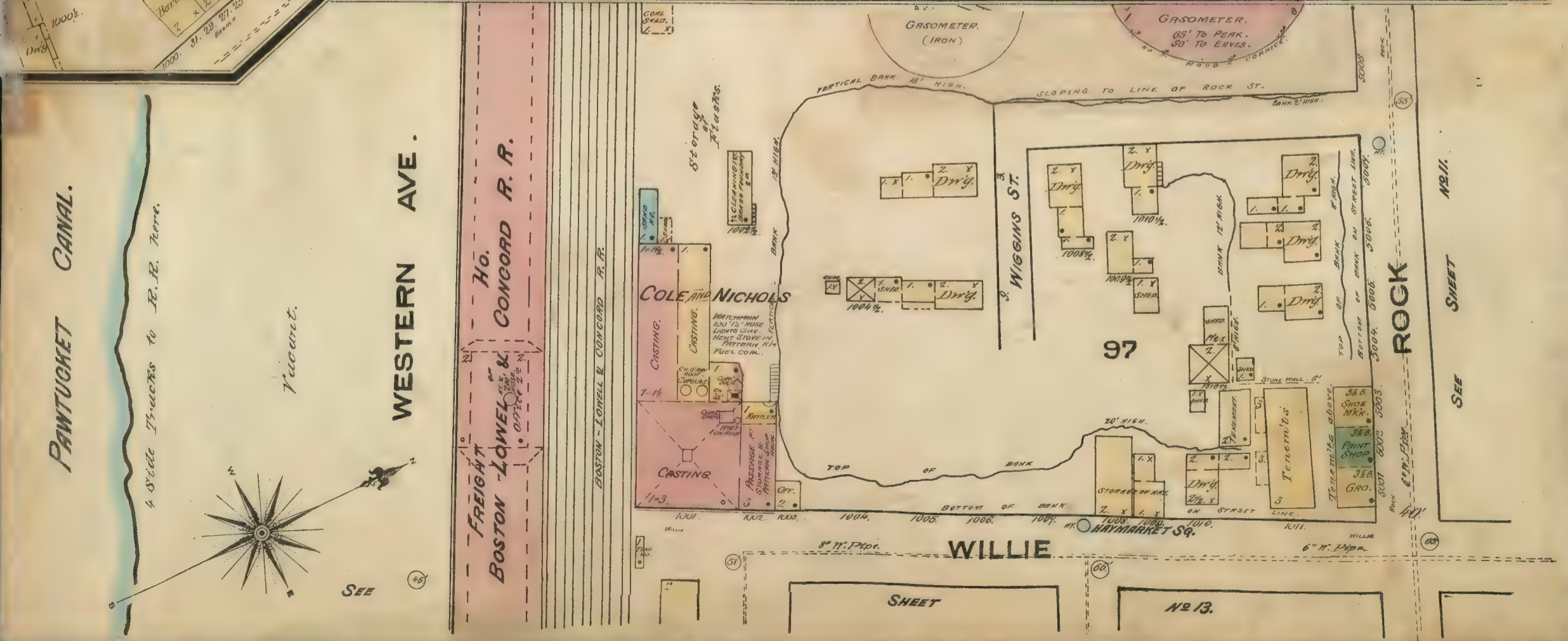
PANTUCKET CANAL.

4 Side Tracks to R.R. Here.



WESTERN AVE.

Ho. Freight Boston-Lowell & Concord R.R.



WILLIE

ROCK



SEE



PAWTUCKET

CANAL

THORNDIKE

SEE SHEET NO. 15

NO. 12. SHEET

SEE SHEET NO. 11

HEREFORD PLACE

NO EXPOSURE FOR 100'



103

102

104

105

108

106

109

ARCH

107

110

111

SOUTHERN DEPT.

LIVINGSTON'S WOOLEN MILL

LIVINGSTON'S GRIST MILL

MIDDLESEX PLACE

GRAND

HOWARD

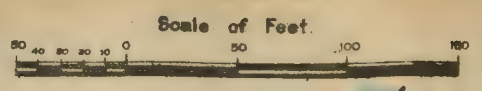
WESTFORD

MARSHALL

WATSON AVE.

CHELMSFORD





Merrimack River.

LOWELL FELTING MILL  
12 trille West of Post Off.  
No. Machinery - One Five Spinning  
One Four Spinning - One Carding  
One Blow Spinning - One Cotton  
on wheels or rollers - One Cotton  
Press - One Steam - One Water  
Wheel - One Engine - One  
Tread - One Loom - One  
Shed - One Frame - One  
Dyeing - One Bleaching - One  
Sizing - One Finishing - One  
Drying - One

STONE MILL  
LAPPER & CARBING  
STORAGE STOCK  
FELTER  
ASSISTANT  
MILL  
WOOD SHED  
DYE HO.  
CEILING SHED

DANIEL GAGE HOUSES.  
ICE HO'S  
ICE

PAWTUCKET

PAWTUCKET

THORNDIKE

Canal

STORAGE

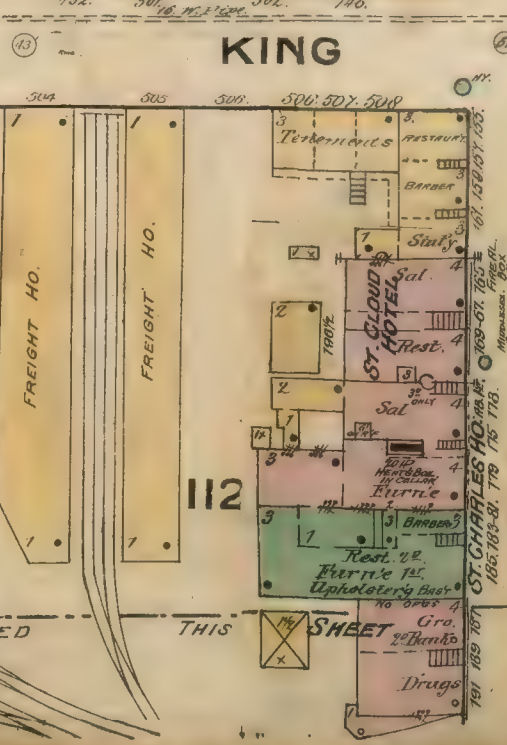
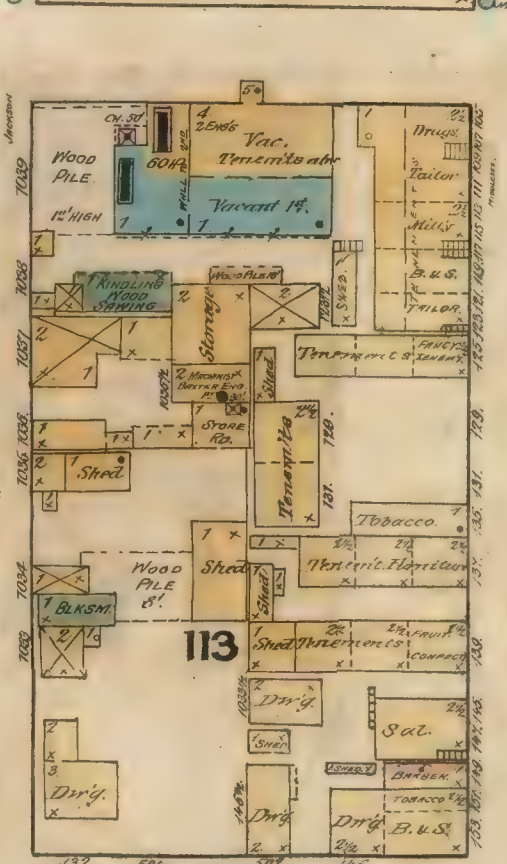
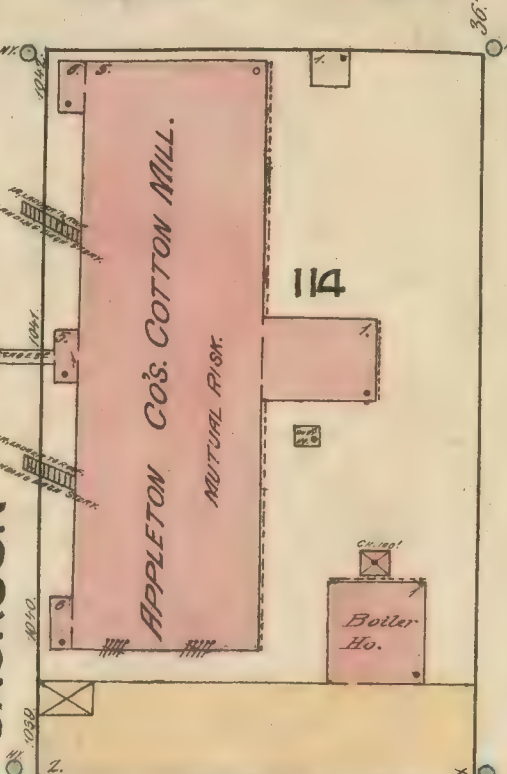
BOSTON & LOWELL R.R.

DETACHED THIS SHEET

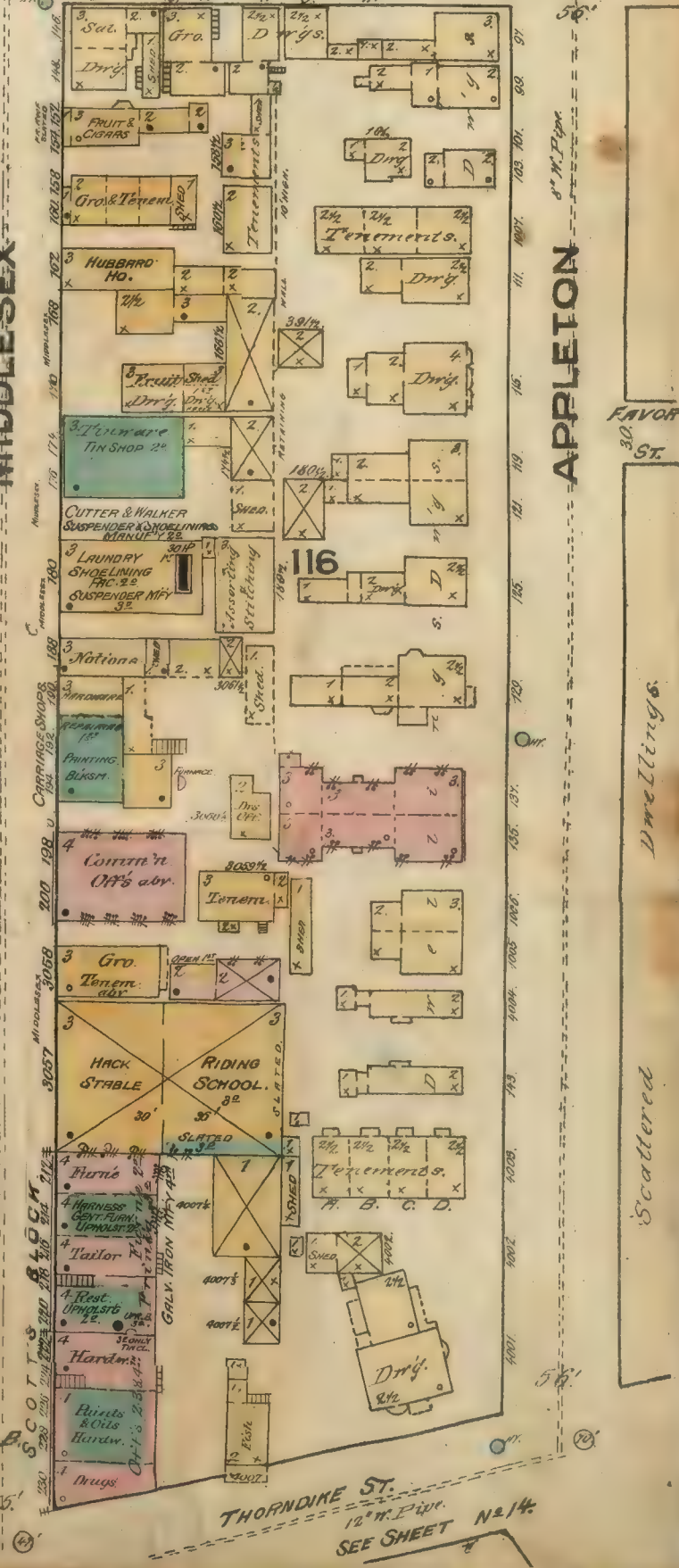
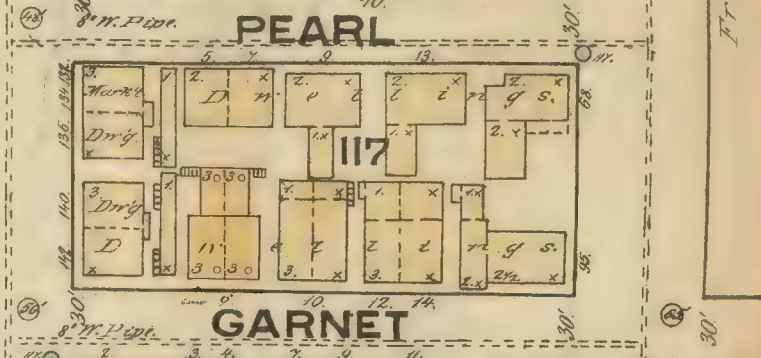
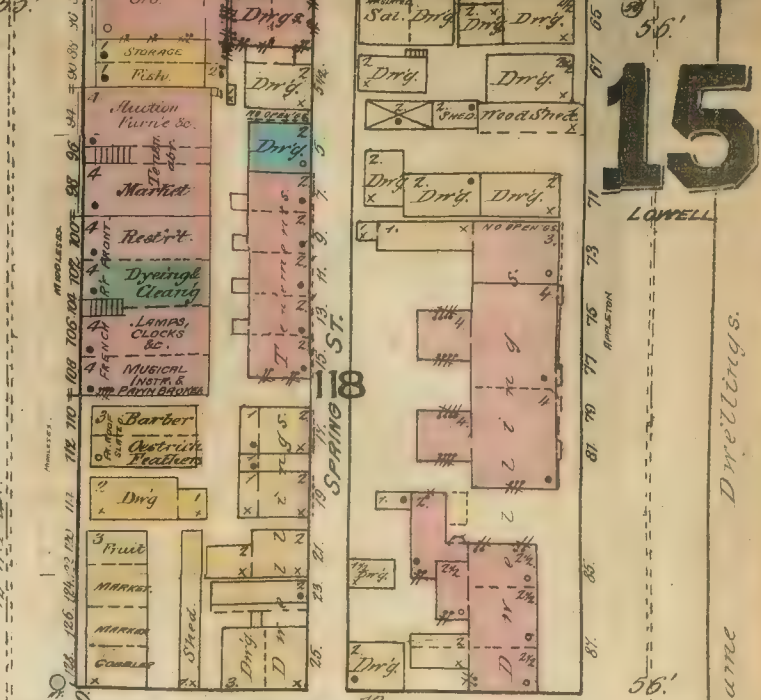
SEE SHEET N 14

SEE SHEET N 14

APPLETON'S SOUTH BLOCK



SHEET N 14 P 10. N 16.



15

LOWELL

PEARL

GARNET

MIDDLESEX

APPLETON

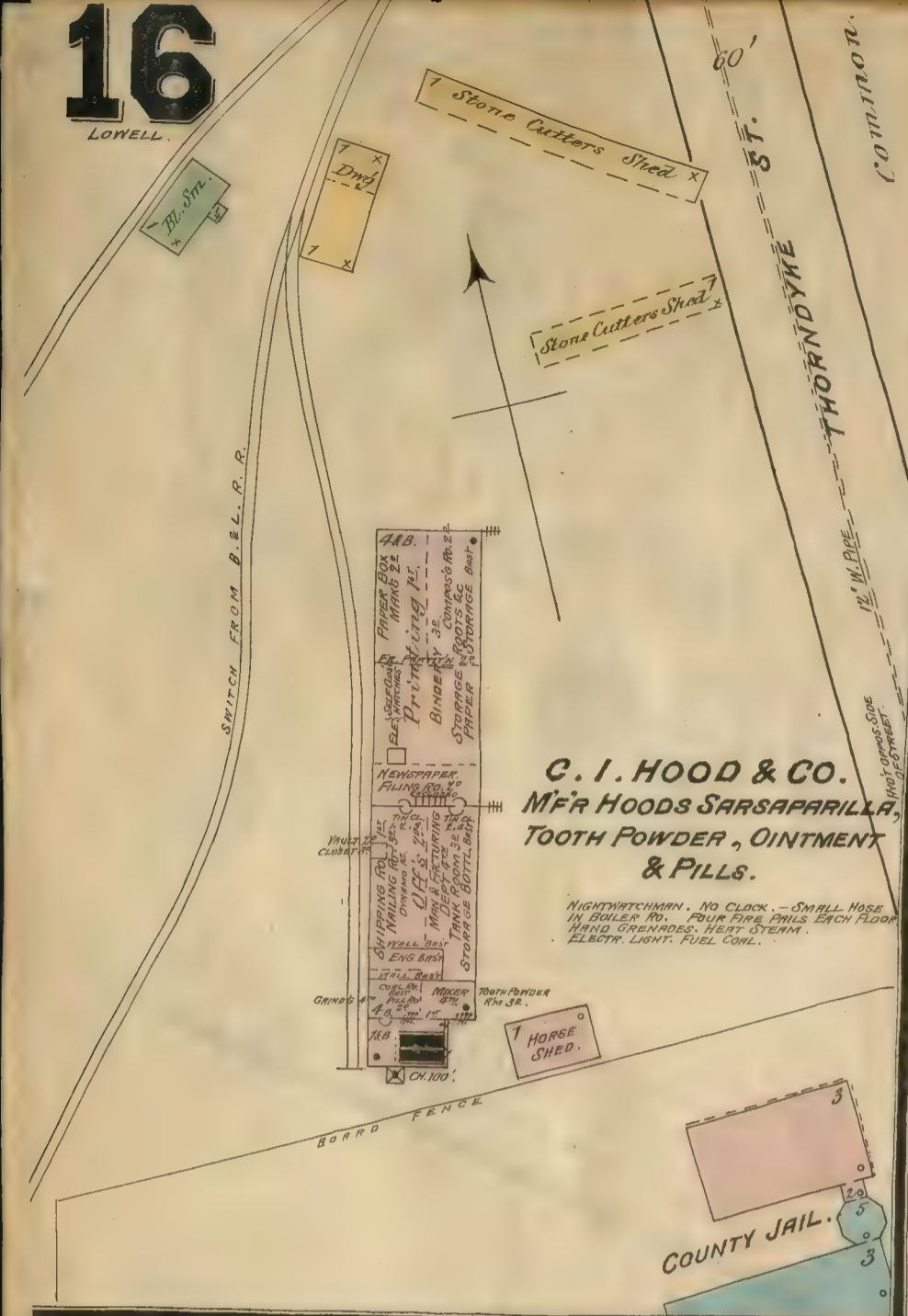
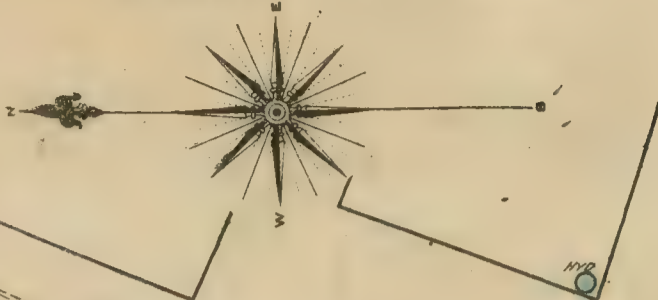
FAVOR ST.

Scattered Dwellings

Dwellings

Scattered Dwellings

SEE SHEET N 14



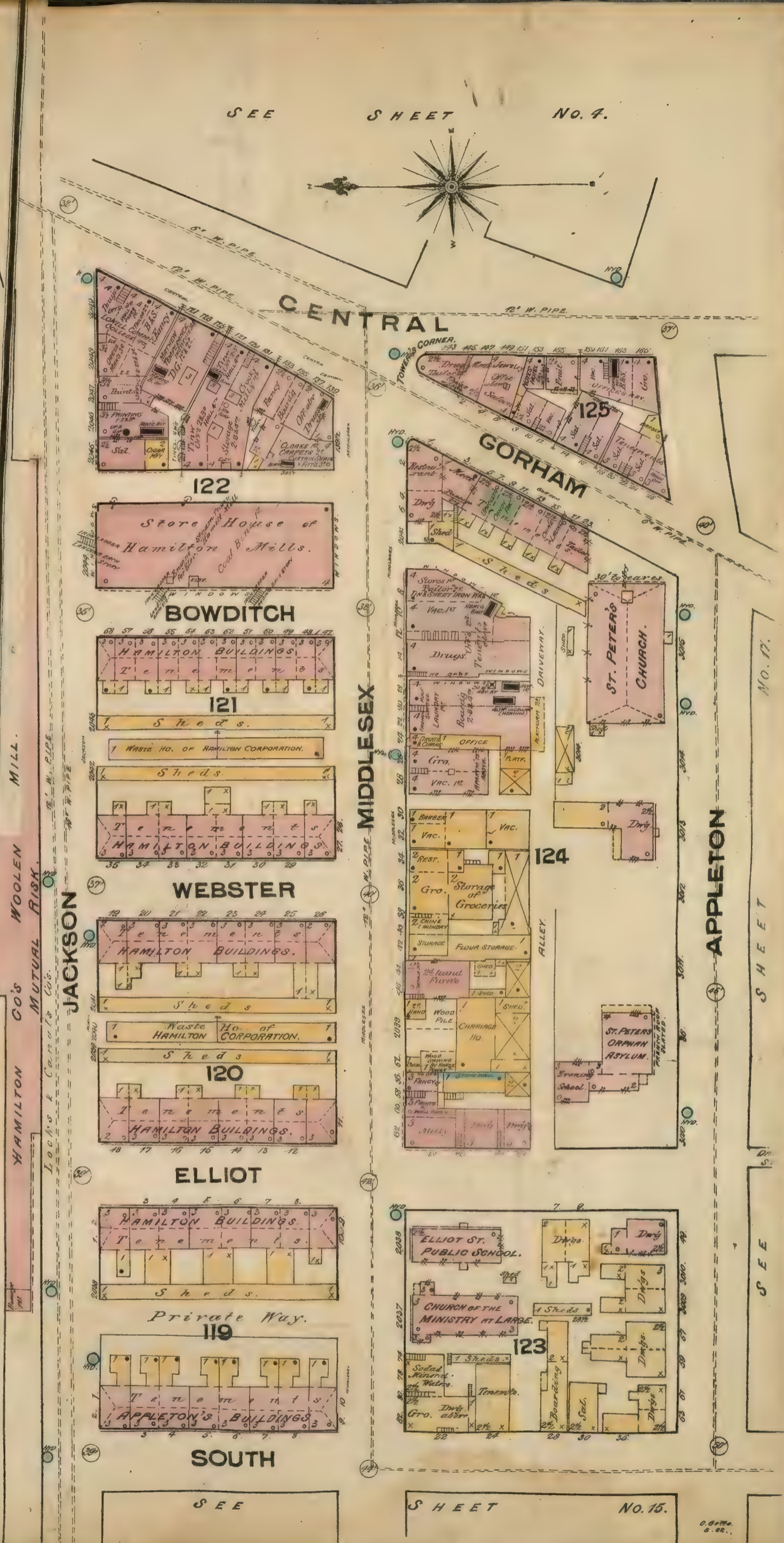
**C. I. HOOD & CO.**  
MFR HOODS SARSAPARILLA,  
TOOTH POWDER, OINTMENT  
& PILLS.

NIGHTWATCHMAN, NO CLOCK - SMALL HOSE  
IN BOILER RO. FOUR FIRE PAILS EACH FLOOR  
HAND GRENADES, HEAT STEAM  
ELECTRY LIGHT FUEL COAL.



**C. W. HARRIS**  
LOOM HARNESS MFG.

Scale of Feet.



CENTRAL

GORHAM

BOWDITCH

WEBSTER

ELLIOT

SOUTH

MIDDLESEX

JACKSON

WOOLEN

MUTUAL RISK

APPLETON

SEE

SHEET

NO. 16.

ELLIOT ST.

APPLETON

34 52 50 48 46 44 42 40 3087

APPLETONS  
PRESBYTERIAN  
CHURCH

126

WINTER

127

SUMMER

CHARLES

SOUTH

NO 16 OPPOSITE

NO 17 OPPOSITE

NO 18 OPPOSITE

NO 19 OPPOSITE

NO 20 OPPOSITE

MALLOY'S COURT

128

GORHAM

UNION

129

130

W. UNION

131

132

ST. JOHN'S  
CHURCH

COURT

133

134

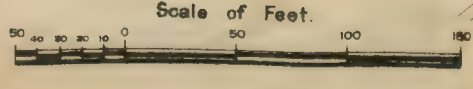
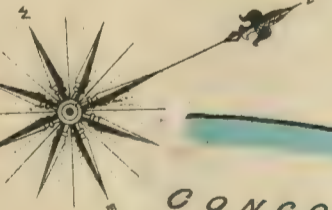
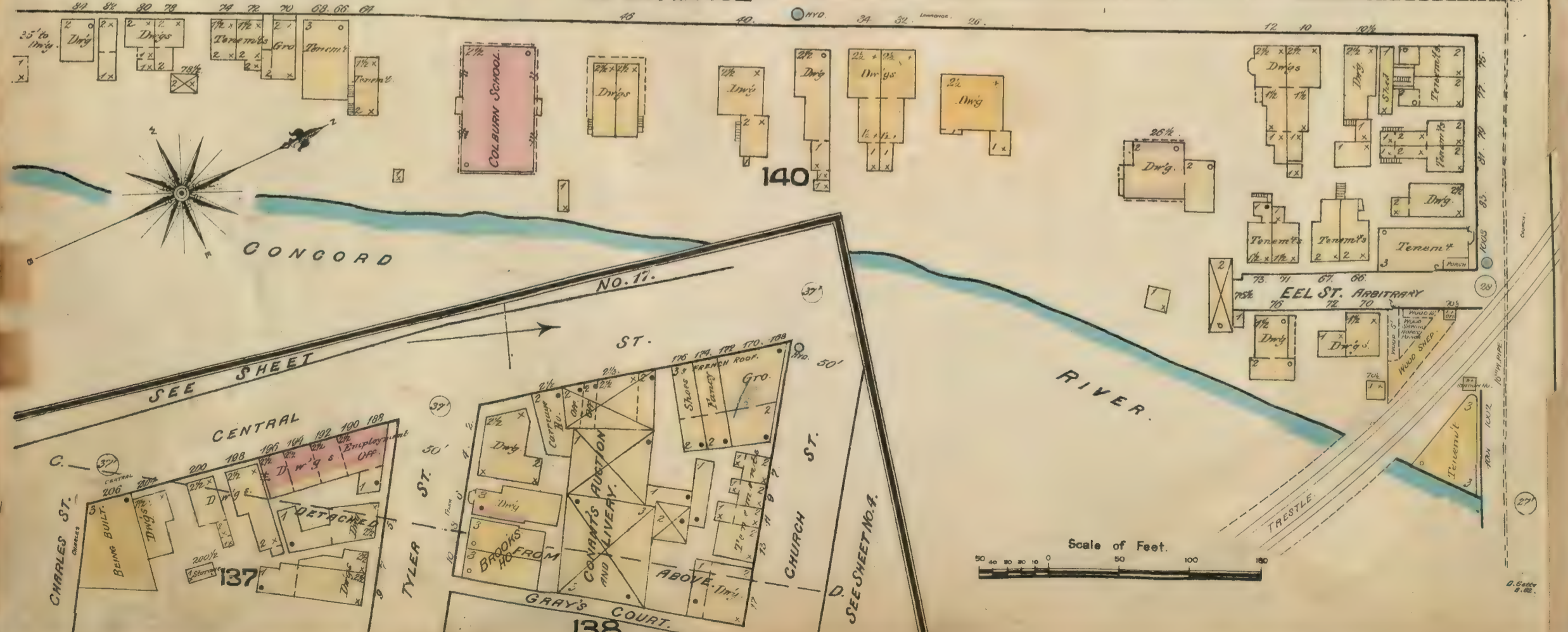
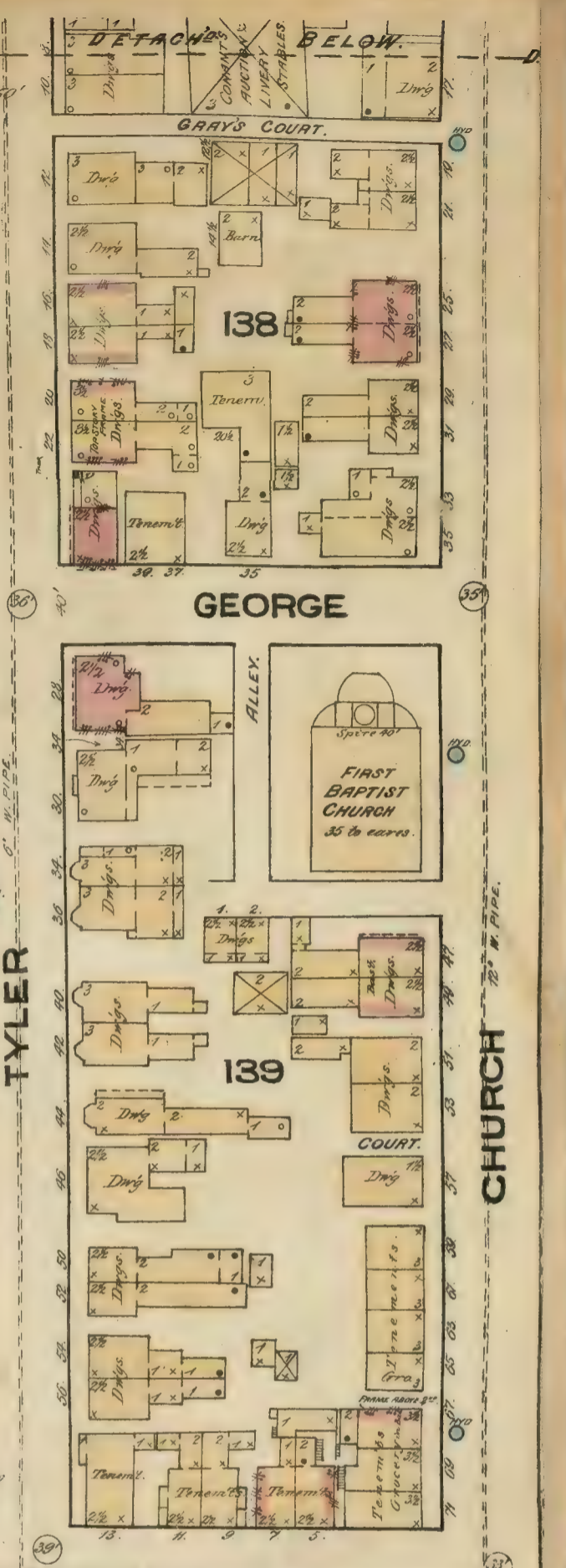
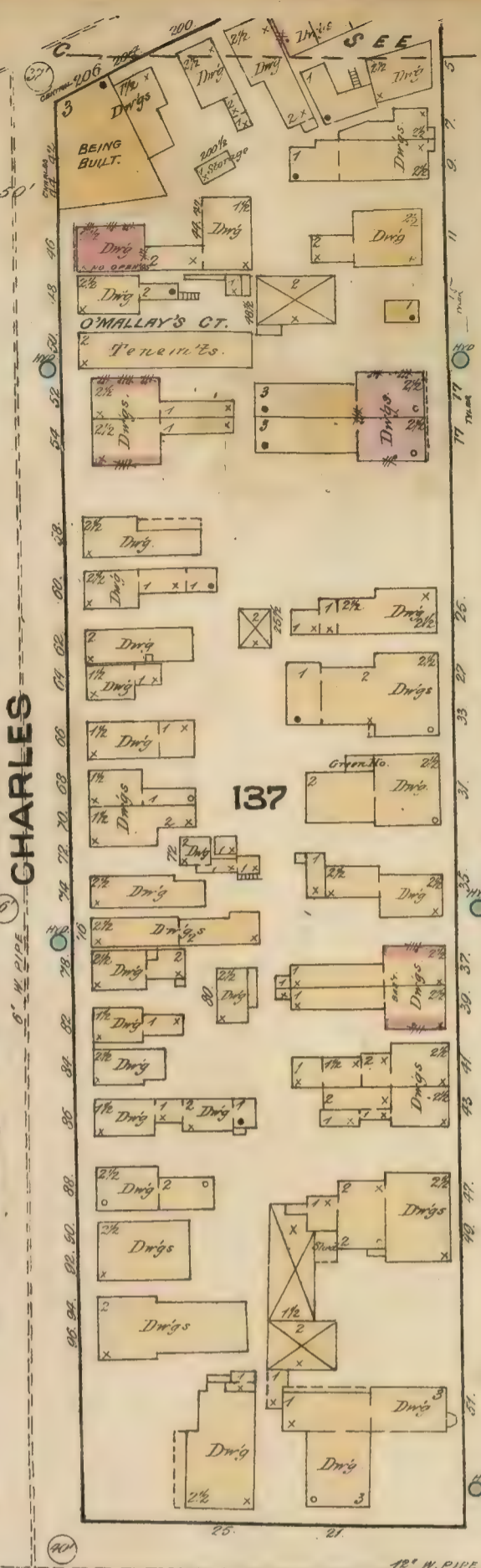
LINDEN

CHAPEL

CENTRE

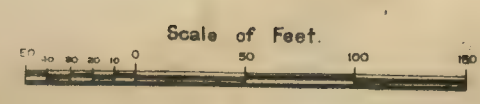


Scale of Feet  
0 20 40 60 80 100





SHEET  
 CADY  
 AMES  
 RICHMOND  
 MILL  
 WAMESIT  
 ABBOTT  
 HUDSON  
 TAYLOR  
 MERRILL



CONCORD RIVER  
 DAM  
 DAM  
 W.M. WALKER & CO. WOOLEN MILLS.  
 MASSIC FALL DYE WORKS  
 J.W. WOOD  
 Running.  
 WATCHMAN - 1 1/2" HOSE  
 HEAT STEAM FUEL COAL  
 POWER WATER  
 NIGHT & DAY WATCHMAN WITH CHUCK  
 CROSS & FALLS EACH FLOOR OR BOTH SIDES  
 HEAT & STEAM. LIGHTS GAS. FUEL COAL.  
 WATER POWER. 50 1/2" HOSE IN BLDG AND  
 100 1/2" HOSE. NO VALVES.  
 GRINNELL AUT. SPRINKLERS IN 'A' & 'B'.

N O E X 7 0 S 2 2 7 E

CONCORD

COURT

ALLEY

TAYLOR

MERRILL

LAWRENCE

ALLEY

ALLEY

ALLEY

ALLEY

SHEET

Nº18

Nº24

SOUTH

exposure.

SOUTH

LOCKE

GORHAM

131

149

COURT HO.

150

COURT

ST. JOHN'S CHURCH

AUBURN

LINDEN

151

152

ELM

WALNUT

POLLARD

CHAPEL

154

CENTRE

153

SCHOOL HO.

CENTRAL

CENTRAL

SEE SHEET NO. 24.

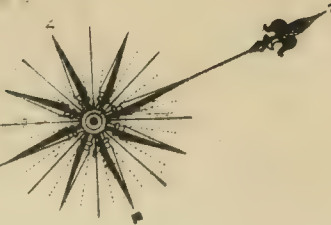
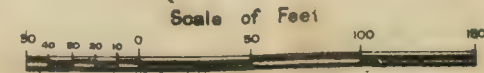
HUDSON ST.

ABBOTT ST.

WINEST ST.

MILL ST.

NO. 19 ST.



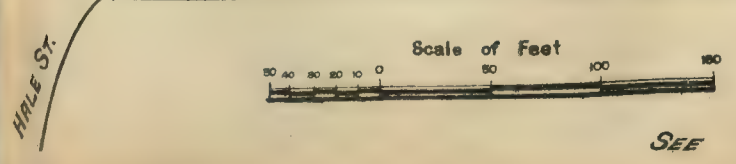


SEE SHEET No 20.  
SEE SHEET No 23.  
SEE SHEET No 20.  
SEE SHEET No 23.  
SEE SHEET No 20.  
SEE SHEET No 23.

FLOYD ST.  
LYON ST.  
CROSBY ST.

CENTRAL

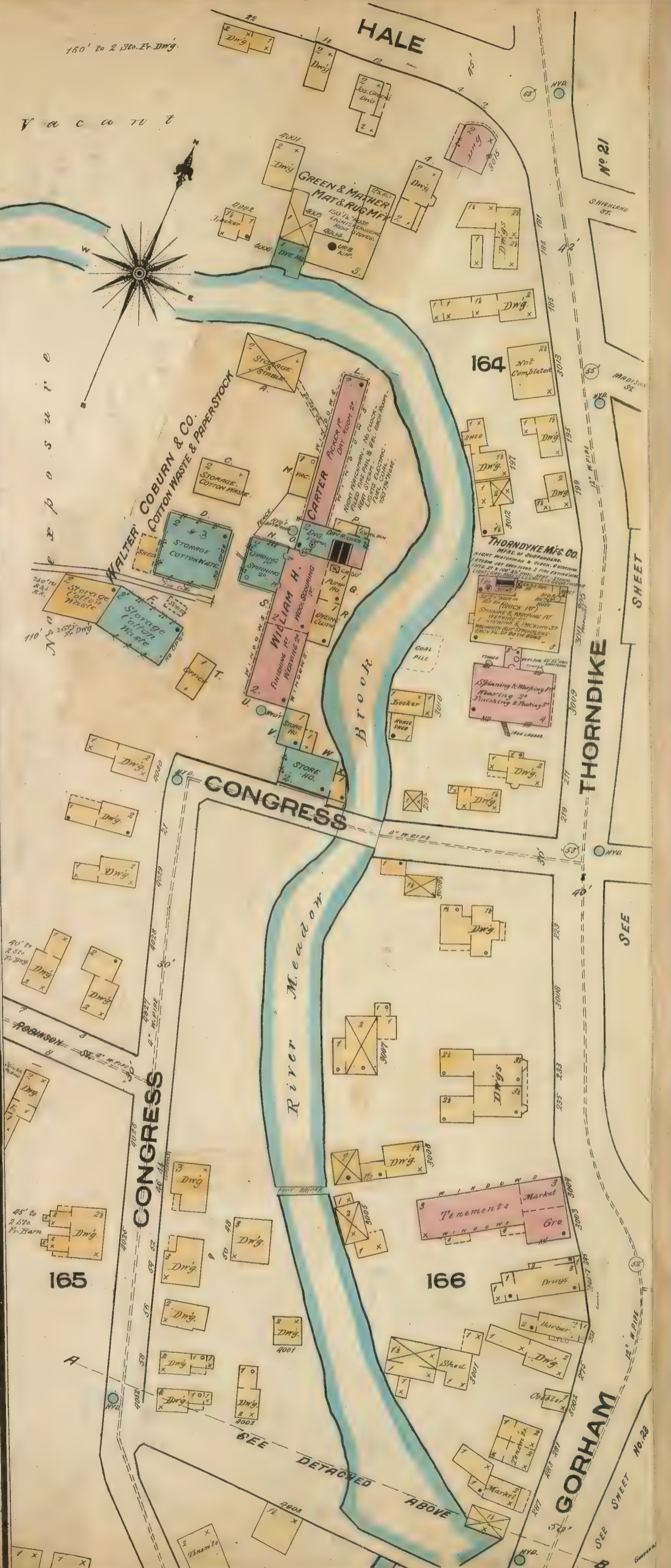
DAVIS CORNER.



SEE SHEET No 22.

SEE SHEET

22



Scale of Feet





SEE SHEET NO 21.

SHEET.

LOWELL.



CENTRAL

FLOYD

LYON

CROSBY

PROSPECT ST

PINE HILL

GORHAM

CHAMBERS

KINSMAN

KINSMAN

170

169

173

174

172

171

169

170

CENTRAL

FLOYD

LYON

CROSBY

PROSPECT ST

PINE HILL

GORHAM

CHAMBERS

KINSMAN

KINSMAN

170

169

173

174

172

171

169

170

CENTRAL

FLOYD

LYON

CROSBY

PROSPECT ST

PINE HILL

GORHAM

CHAMBERS

KINSMAN

KINSMAN

170

169

173

174

172

171

169

170

CENTRAL

FLOYD

LYON

CROSBY

PROSPECT ST

PINE HILL

GORHAM

CHAMBERS

KINSMAN

KINSMAN

170

169

173

174

172

171

169

170

CENTRAL

FLOYD

LYON

CROSBY

PROSPECT ST

PINE HILL

GORHAM

CHAMBERS

KINSMAN

KINSMAN

170

169

173

174

172

171

169

170

CENTRAL

FLOYD

LYON

CROSBY

PROSPECT ST

PINE HILL

GORHAM

CHAMBERS

KINSMAN

KINSMAN

170

169

173

174

172

171

169

170

CENTRAL

FLOYD

LYON

CROSBY

PROSPECT ST

PINE HILL

GORHAM

CHAMBERS

KINSMAN

KINSMAN

170

169

173

174

172

171

169

170

CENTRAL

FLOYD

LYON

CROSBY

PROSPECT ST

PINE HILL

GORHAM

CHAMBERS

KINSMAN

KINSMAN

170

169

173

174

172

171

169

170

CENTRAL

FLOYD

LYON

CROSBY

PROSPECT ST

PINE HILL

GORHAM

CHAMBERS

KINSMAN

KINSMAN

170

169

173

174

172

171

169

170

CENTRAL

FLOYD

LYON

CROSBY

PROSPECT ST

PINE HILL

GORHAM

CHAMBERS

KINSMAN

KINSMAN

170

169

173

174

172

171

169

170

CENTRAL

FLOYD

LYON

CROSBY

PROSPECT ST

PINE HILL

GORHAM

CHAMBERS

KINSMAN

KINSMAN

170

169

173

174

172

171

169

170

CENTRAL

FLOYD

LYON

CROSBY

PROSPECT ST

PINE HILL

GORHAM

CHAMBERS

KINSMAN

KINSMAN

170

169

173

174

172

171

169

170

CENTRAL

FLOYD

LYON

CROSBY

PROSPECT ST

PINE HILL

GORHAM

CHAMBERS

KINSMAN

KINSMAN

170

169

173

174

172

171

169

170

CENTRAL

FLOYD

LYON

CROSBY

PROSPECT ST

PINE HILL

GORHAM

CHAMBERS

KINSMAN

KINSMAN

170

169

173

174

172

171

169

170

CENTRAL

FLOYD

LYON

CROSBY

PROSPECT ST

PINE HILL

GORHAM

CHAMBERS

KINSMAN

KINSMAN

170

169

173

174

172

171

169

170

CENTRAL

FLOYD

LYON

CROSBY

PROSPECT ST

PINE HILL

GORHAM

CHAMBERS

KINSMAN

KINSMAN

170

169

173

174

172

171

169

170

CENTRAL

FLOYD

LYON

CROSBY

PROSPECT ST

PINE HILL

GORHAM

CHAMBERS

KINSMAN

KINSMAN

170

169

173

174

172

171

169

170

CENTRAL

FLOYD

LYON

CROSBY

PROSPECT ST

PINE HILL

GORHAM

CHAMBERS

KINSMAN

KINSMAN

170

169

173

174

172

</





LOWELL



MEN ORGANIZED INTO FIRE CO. WATCHMAN & CLUCK 12 STATIONS. AUT. SPRINKLER THROUGHOUT  
VERT. PIPE & HOSE EACH FLOOR. LARGE P. PUMP & CITY WATER. HEAT, STEAM,  
LIGHT, GAS. FUELS COAL. POWER, WATER & STEAM. FIRE PAILS.

CONCORD RIVER.

**STERLING WOOLEN MILL**  
A. FULLING, GIGGING & FINISHING  
B. STORE ROOM  
C. COAL SHED  
D. OFFICE  
E. DYE HO.  
F. BOILER HO.  
G. STORAGE  
H. MACHINE SHOP  
I. PACKING  
J. SHEARING  
K. WOOD DRY HO.

**FAULKNER WOOLEN MILL**  
D. Wool Scouring & Finishing last  
E. Weaving 1st & 2d  
F. Spinning 3d  
G. Carding 1st  
H. COAL SHED  
I. OFFICE  
J. WOOD DRY HO.

Private Way.

WAMESIT CANAL.

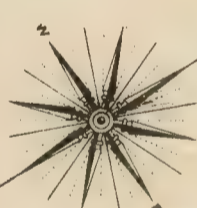
WAMESIT CANAL.

SEE SHEET NO. 25.  
LAWRENCE  
A. Machine Shop  
B. Packing  
C. Shearing  
D. Store  
E. Medicine Shop  
F. Horses  
G. 12" W. Pipe  
H. AMERICAN BOLT CO.  
I. HIRE APPARATUS  
J. LIGHT GAS. POWER WATER & STEAM.  
K. SHED

VACANT.

FAULKNER  
ST. PIPE W. 8 ST.

TEMPER BARS



no exposure.

LAWRENCE

Canal

WAMESIT

E. HAPGOOD AND SONS  
WOOL MATTRESS MFY  
1. SHODDY PICKERS.  
2. STORAGE AT MATTRESS MFY  
3. STORAGE HOUSES.  
NO WATCHMAN - WATER PAILS -  
POWER & HOT STEAM - LIGHTS KEROSENE -  
150' 2" HOSE IN BOILER HO.

R.W. KENDALL & CO.  
DYEING AND PRINTING WORKS  
1. COAL SHED  
2. DYE HO.  
3. FINISHING 1st  
4. DRYING 2d  
5. STORAGE 3d  
NIGHT WATCHMAN  
FILLED FIRE PAILS & HAND GRENADES  
IN EACH RM  
HEAT, STEAM, LIGHTS GAS -  
150' 2" HOSE AT

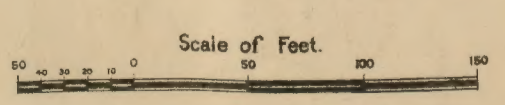
CONCORD RIVER.

FAULKNER WOOLEN MILL.  
1. STORAGE COAL  
2. STORAGE  
3. STORE HO.  
4. COAL SHED  
5. OFFICE  
6. WOOD DRY HO.

U.S. CORD CO.  
1. STORAGE HOIST  
2. STORAGE HOIST  
3. BRACKING 2d

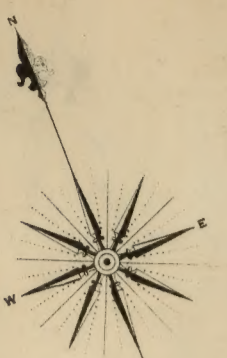
Scale of Feet. 0 50 100 150





SEE SHEET No. 29.  
SEE SHEET No. 28.  
SEE SHEET No. 27.

No. 28



# 29

LOWELL MASS.  
ADDIT'L SHEET  
FEB. 1888



SHEET

W. 5th ST.

W. 6th ST.

SEE

SEE

BRIDGE

WEBSTER ST.

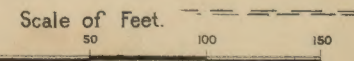
METHUEN

VARNUM

MYRTLE

READ

SEE SHEET No. 2



Shallow Pond in Winter.

**LOWELL STEAM BOILER WKS.**  
DUNDT & PARTIAL NIGHT WATCHMEN.  
TANK IN TOWER, 100' HOSE, 2 1/2" DIA.  
800' 3/4" HOSE, POWER-STEAM.  
FUEL: COAL, LIGHT, GAS.

Boiler Shop.  
Tower 60'.  
Mechanics Shop.  
Off.

**W. ADICKENSON'S SOAP WKS.**  
NO WATCHMAN, 50' TOWER, 100' HOSE.  
FUEL: COAL, LIGHT, GAS.  
NO FIRE APPARATUS.

TANNERS

**MERRIMAC CROQUET CO.**  
TOYS, PATTERN WORK &  
NO WATCHMAN, V. R. & 50' 2 1/2" HOSE.  
WALWORTH AUTOMATIC SPRINKLERS  
THROUGHOUT, FIRE PAILS OR BL.  
HAND GRENADES, 2nd FLOOR, LIGHTS:  
GAS, HEAT, STEAM, FUEL, COAL & SHAV.  
CITY WATER.

Boiler Shop.  
Tower.  
B. Srv.  
Off.

**COBURN OIL W. HOSES CO.**  
NO WATCHMAN, NO FIRE APPARATUS.

Cooperage.  
Wagon Shop.  
Off.

**LAMSON STORE SERVICE Co.**  
WATCHMAN, CLOCK IS STATIONS, ONE  
GAS, 2nd FLOOR IN MAIN BLDG.  
FUEL: COAL, LIGHT, GAS.  
HAND GRENADES IN  
EACH ROOM.

Store Ho.  
Horse Sheds.  
Off.

**MACHINE SHOP BROS.**  
Packing Rm. 75'.  
Wood Working Machs. 25'.  
Revolving 35'.  
No. 10.  
No. 11.  
No. 12.  
No. 13.  
No. 14.  
No. 15.  
No. 16.  
No. 17.  
No. 18.  
No. 19.  
No. 20.  
No. 21.  
No. 22.  
No. 23.  
No. 24.  
No. 25.  
No. 26.  
No. 27.  
No. 28.  
No. 29.  
No. 30.

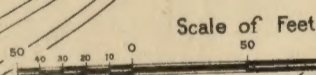
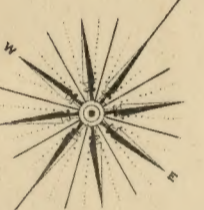
**PEVEY BROS. FOUNDRY.**  
WATCHMAN, SPIRAL HOSE IN BOILER ROOM.

Foundry.  
Foundry.  
Brass Foundry.

**NOVELTY SUSPENDER WKS.**  
WATCHMAN, V. R. & HOSE, HAND GRENADES.  
HEAT: STEAM.  
LIGHTS: GAS.

W. H. BAGSHAW  
MFR. WOOL COMBS, PINS, PICKER-TEETH  
NO WATCHMAN, HAND  
GRENADES, HOT: STEAM.  
FUEL: COAL, LIGHT, GAS.

Wood Working 15'.  
Machina Shop 15'.  
Bast. 15' & 25'.  
Forge Shop.  
No. 1.  
No. 2.  
No. 3.  
No. 4.  
No. 5.  
No. 6.  
No. 7.  
No. 8.  
No. 9.  
No. 10.  
No. 11.  
No. 12.  
No. 13.  
No. 14.  
No. 15.  
No. 16.  
No. 17.  
No. 18.  
No. 19.  
No. 20.

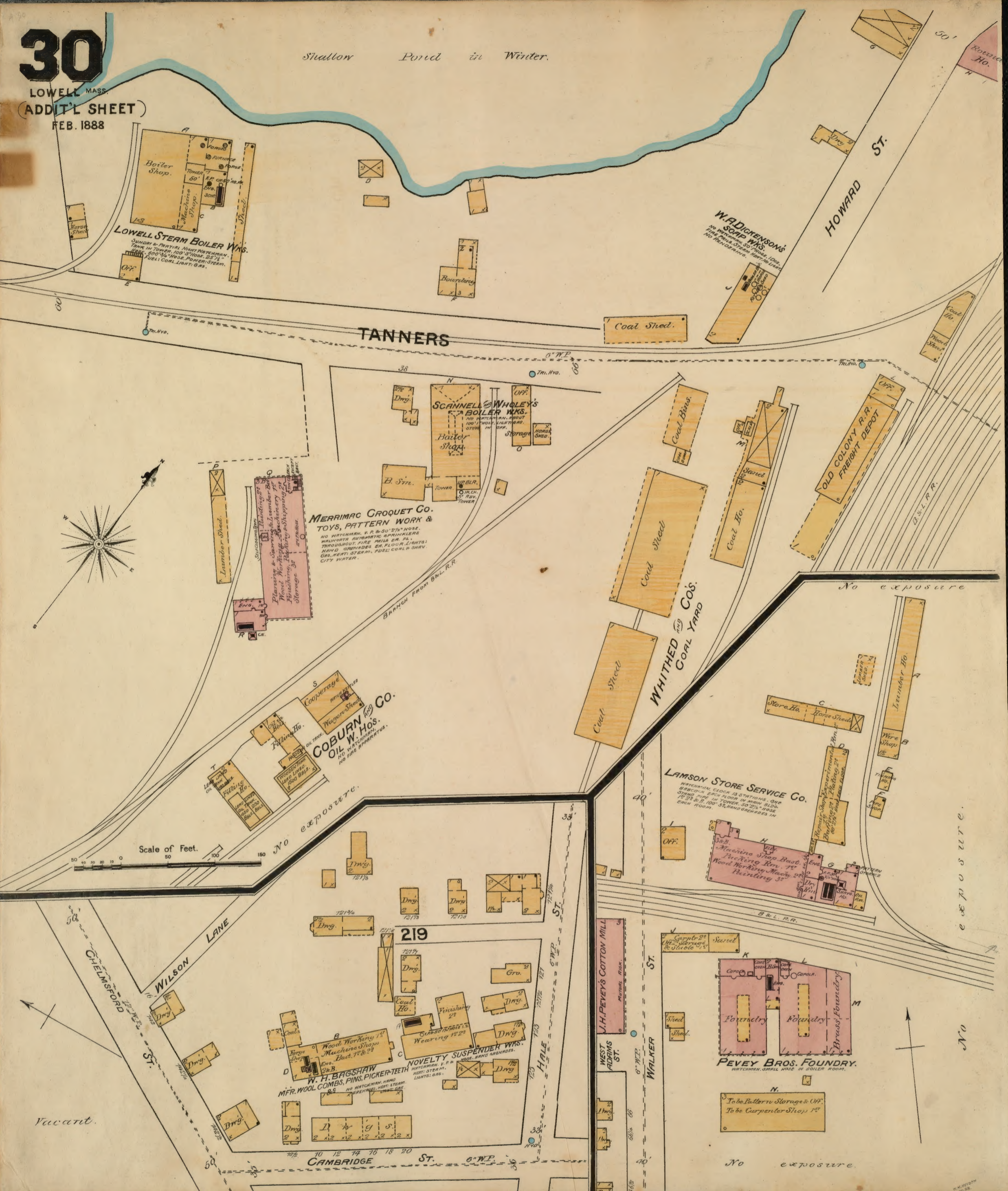


Vacant.

NO EXPOSURE.

NO EXPOSURE.

NO EXPOSURE.

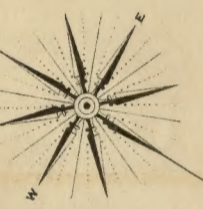
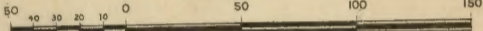




AT N. CHELMSFORD,  
4 MILES FROM LOWELL,  
ON B. & L. R. R.  
HYDS SHOWN ARE CONND  
WITH PUMPS OF BOTH GEO. C. MOORE  
& SILVER & GRAY, UNABLE TO LOCATE  
AND OBTAIN SIZE OF WIPES.



Scale of Feet.



232

233

234

236

235

SEE ABOVE.

COTTAGE ROW

LOWELL ROAD

ROAD

BOSTON R'D

BOSTON ROAD

GAY

ROAD.

HELDON & CO.

GEO. C. MOORE, WOOL STORAGE.

GEO. C. MOORE, WOOL SCOURING & YARN MFGY.  
Combing &  
Carding 1E  
Spinning 2E  
Exhaust Steam  
H&D Dye  
Camel Hair  
Scouring 2E  
Carp bench 2E  
Wool Scouring & Sorting.  
STORAGE CASTINGS.  
GEO. C. MOORE  
Storage  
Patterns

CHELMSFORD FOUNDRY CO.  
PATTERN SHOP 1E  
MACHINE SHOP 3E  
SILVER & GRAY, MACHINISTS.  
PATTERNS.  
B. SIV.

NIGHT & SUNDAY WATCHMAN,  
& BURN CLOCK, PUMP IN  
WHEEL NO. 1000 2 1/2" HOSE,  
BURNERS WATER & BUCKETS,  
HEAT STEAM, LIGHTS, POWER,  
POWER, STREAM & WATER.

NIGHT WATCHMAN,  
NO FIRE SPIES  
DEPEND ON HOSE  
BELONGING TO ADJOINING  
PROPERTIES FOR PROTECTION.

NIGHT & DAY WATCHMAN,  
BURN & SHARP CLOCK,  
& P. & HOSE BARRLS OF WATER & PAILS E.A.P.,  
HEAT STEAM, LIGHTS, OIL, POWER, WATER.

WASTE STORAGE

GEO. C. MOORE, WOOL STORAGE.

Vac.

Vac.

Vac. 1ST Storage 2E

SHED.

Dwg.

BELOW.

SEE

Storage.

Storage.

Storage.

Storage.

Storage.

Storage.

Storage.

Storage.

Storage.

Storage.

Storage.

Storage.

Storage.

Storage.

Storage.

Storage.

Storage.

Storage.

Storage.

Storage.

Storage.

Storage.

Storage.

Storage.

Storage.

Storage.

Storage.

Storage.

Storage.

Storage.

Storage.

Storage.

Storage.

Storage.

Storage.

Storage.

Storage.

Storage.

Storage.

WASTE STORAGE

Vac.

Vac.

Vac. 1ST Storage 2E

SHED.

Dwg.

BELOW.

SEE

Storage.

Storage.

Storage.

Storage.

Storage.

Storage.

Storage.

Storage.

Storage.

Storage.

Storage.

Storage.

Storage.

Storage.

Storage.

Storage.

Storage.

Storage.

Storage.

Storage.

Storage.

Storage.

Storage.

Storage.

Storage.

Storage.

Storage.

Storage.

Storage.

Storage.

Storage.

Storage.

Storage.

Storage.

Storage.

Storage.

Storage.

Storage.

Storage.

CHURCH